

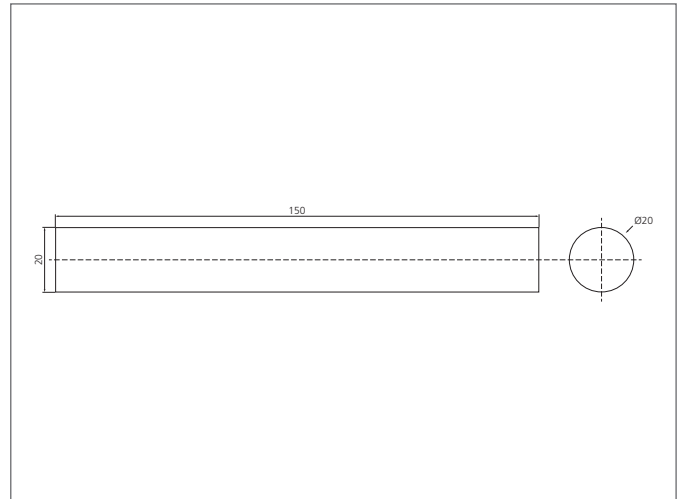
## TR 20 Test rod

- Reliable verification of the protected area
- Easy handling



### Safety instructions

All the installation, connection and safety regulations, as per our technical information, have to be strictly adhered to.  
The set-up of the products have to be made by skilled staff, only.  
Repair exclusively made by di-soric.



### TECHNICAL INFORMATION (typ.)

Operating principle	Test rod
Size	150 mm (Length/area) Ø 20 mm (Diameter)
For	Safety light curtains with 20 mm resolution
Material	Aluminium, matte surface (Test rod)