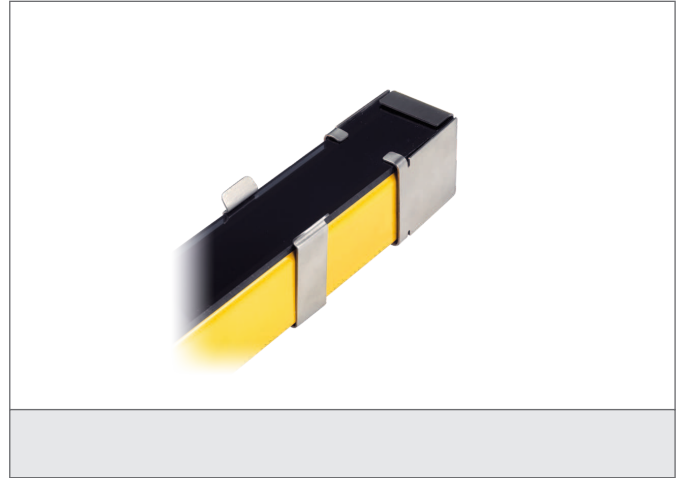


PSE 900

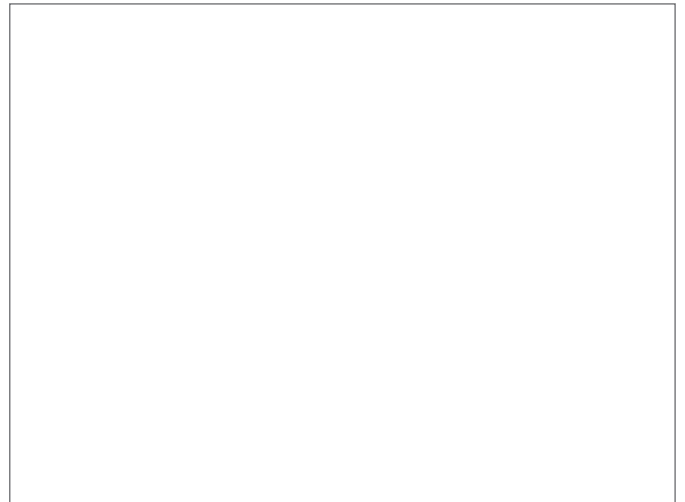
Protective screen kit

- Protection of welding sparks, scratches and aggressive medias in working space
- Quick and easy fix and mounting
- Robust design



Safety instructions

All the installation, connection and safety regulations, as per our technical information, have to be strictly adhered to.
The set-up of the products have to be made by skilled staff, only.
Repair exclusively made by di-soric.



TECHNICAL INFORMATION (typ.)

Operating principle	Protective screen
For	910 mm protective field height
Material	Polycarbonate (protective glass)
Scope of delivery	4 protective screens, (stainless steel clamps / -caps to be ordered separately)

