

Technical data sheet · Plastic elbow fitting AWK-P

Cable fittings and accessories



Identification	Type	AWK-P PG 16
	Part-No.	600273

Use/Area of application

Properties	<ul style="list-style-type: none">• Elbow fitting with O-Ring seal and additional locking nut• Direction of reduction continuously adjustable
------------	--

Technical data

Strain relief	No
Material	Polyamide 6 GF 30
Colour	grey or black
Protection class	IP 65
SW	27 mm
O-Ring (OR)	Neoprene
Locking nut	Polyamide 6 GF 30
weight approx.	1.62 kg/100 piece
Thread	PG 16

Design

D	27.0 mm
G	PG 16
H	25.0 mm
K	17.0 mm
L 4	8 mm

24.11.2007 – Subject to technical modification

Part-No. 600273

USA: LUTZE INC.

13330 South Ridge Drive • Charlotte, NC 28273
Tel.: +1 (704) 504-0222 • Fax: +1 (704) 504-0223
www.lutze.com • info@lutze.com

United Kingdom: LÜTZE Ltd.

Unit 3 Sandy Hill Park
Sandy Way, Amington • GB-Tamworth, Staffs, B77 4DU
Tel.: +44 (0)1827 31333-0 • Fax: +44 (0)1827 31333-2
www.lutze.com • sales.gb@lutze.co.uk



Systematic Technology

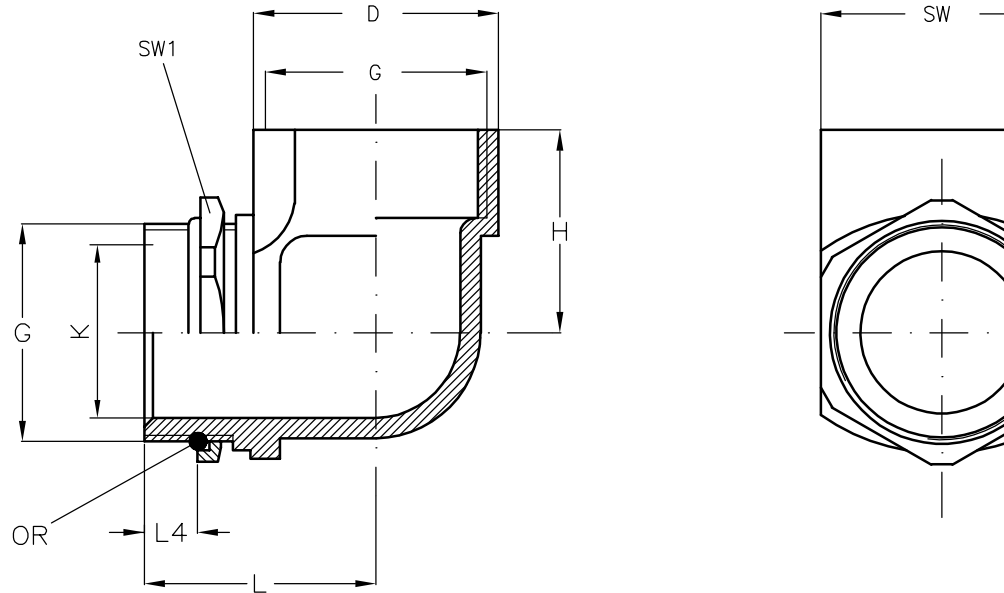
Technical data sheet · Plastic elbow fitting AWK-P

L	29.5 mm
SW	27 mm
SW 1 = across flats	30 mm

General

PU	1 piece
----	---------

Dimensions



24.11.2007 – Subject to technical modification

Part-No. 600273

USA: LUTZE INC.

13330 South Ridge Drive • Charlotte, NC 28273
Tel.: +1 (704) 504-0222 • Fax: +1 (704) 504-0223
www.lutze.com • info@lutze.com

United Kingdom: LÜTZE Ltd.

Unit 3 Sandy Hill Park
Sandy Way, Amington • GB-Tamworth, Staffs, B77 4DU
Tel.: +44 (0)1827 31333-0 • Fax: +44 (0)1827 31333-2
www.lutze.com • sales.gb@lutze.co.uk