

Technical data sheet - Metal NPT

Lütze TOP-T Fittings NPT



Identification	Type	NPT 3/4"
	Part-No.	600972
Use/Area of application		
Properties	<ul style="list-style-type: none">• Integrated strain relief• Anti-twist design• Wide sealing and clamping range• Easy to install	
Technical data		
Temperature range	-20 °C to +100 °C +14 to +212 F	
Thread	NPT 3/4"	
Design		
H	7.0 mm	
SW 1 = across flats	30 mm	
General		
Comments	Design allows for shield termination	

08.12.2012 – Subject to technical modification

Part-No. 600972

USA: LUTZE INC.

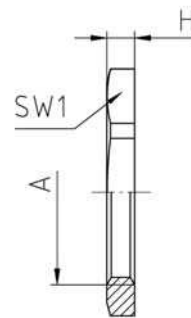
13330 South Ridge Drive • Charlotte, NC 28273, USA
Tel. +1 (704) 504-0222 • Fax +1 (704) 504-0223
www.lutze.com • info@lutze.com

United Kingdom: LÜTZE Ltd.

Unit 3, Sandy Hill Park
Sandy Way, Amington • GB-Tamworth, Staffs B77 4DU
Tel. +44 (0)1827 31333-0 • Fax +44 (0)1827 31333-2
www.lutze.com • sales.gb@lutze.co.uk

Technical data sheet - Metal NPT

Dimensions



08.12.2012 – Subject to technical modification

Part-No. 600972

USA: LUTZE INC.

13330 South Ridge Drive • Charlotte, NC 28273, USA
Tel. +1 (704) 504-0222 • Fax +1 (704) 504-0223
www.lutze.com • info@lutze.com

United Kingdom: LÜTZE Ltd.

Unit 3, Sandy Hill Park
Sandy Way, Amington • GB-Tamworth, Staffs B77 4DU
Tel. +44 (0)1827 31333-0 • Fax +44 (0)1827 31333-2
www.lutze.com • sales.gb@lutze.co.uk



SYSTEMATIC TECHNOLOGY