



Identification	Type	LD-V8-0863 DC 24V
	Part-No.	700863
Technical data		
Function type	Plug adaptor	
Protection device	Diode + LED	
Nominal voltage	DC 24 V	
Current Consumption per LED	4 mA	
Shut-off points	1 V	
Holding capacitance	1300 V / 3 A	
General		
Form	Plug adaptor V8	
Status indication LED	LED green	
Housing material	PA black / transparent	
Protection class	IP 65	
Field installation	pluggable on solenoid coil, plug seal not applicable	
Operation temperature range	-20 °C – 60 °C	
Storage temperature range	-25 °C ... 80 °C	
Dimensions (w × h × d)	29.5 × 41.5 × 45.0 mm	
Weight (kg/piece)	0.010	
Standards	EN 175301-803 (DIN 43 650), ISO 4400	

29.01.2017 – Subject to technical modification

Part-No. 700863

USA: LUTZE INC.

13330 South Ridge Drive • Charlotte, NC 28273, USA
Tel. +1 (704) 504-0222 • Fax +1 (704) 504-0223
www.lutze.com • info@lutze.com

United Kingdom: LÜTZE Ltd.

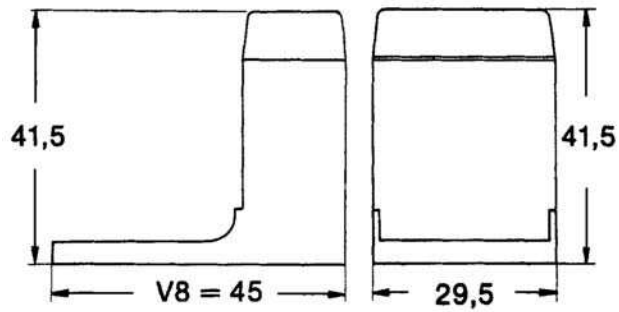
Unit 3, Sandy Hill Park
Sandy Way, Amington • GB-Tamworth, Staffs B77 4DU
Tel. +44 (0)1827 31333-0 • Fax +44 (0)1827 31333-2
www.lutze.com • sales.gb@lutze.co.uk



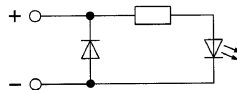
SYSTEMATIC TECHNOLOGY

Technical data sheet • Suppression Technology

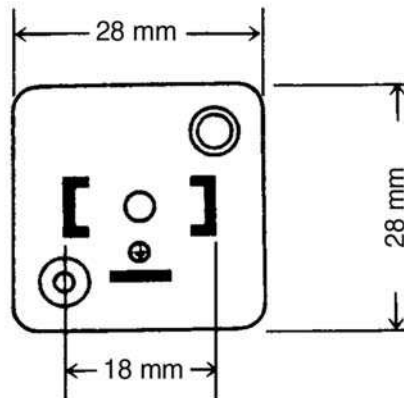
Dimensions



PIN assignment



Contact arrangement



29.01.2017 – Subject to technical modification

Part-No. 700863

USA: LUTZE INC.

13330 South Ridge Drive • Charlotte, NC 28273, USA

Tel. +1 (704) 504-0222 • Fax +1 (704) 504-0223

www.lutze.com • info@lutze.com

United Kingdom: LÜTZE Ltd.

Unit 3, Sandy Hill Park

Sandy Way, Amington • GB-Tamworth, Staffs B77 4DU

Tel. +44 (0)1827 31333-0 • Fax +44 (0)1827 31333-2

www.lutze.com • sales.gb@lutze.co.uk



SYSTEMATIC TECHNOLOGY