



| | | |
|-----------------------|----------|----------------------|
| Identification | Type | LZ-V8-0897 AC/DC 24V |
| | Part-No. | 700897 |

Technical data

| | |
|-----------------------------|--------------|
| Function type | Plug adaptor |
| Protection device | Z-Diode |
| Nominal voltage | AC/DC 24 V |
| Current Consumption per LED | 4 mA |
| Shut-off points | ≤52 V |
| Rated frequency | 50–60 Hz |
| Holding capacitance | 15 VA |

General

| | |
|-----------------------------|--|
| Form | A (V8) |
| Status indication LED | LED green |
| Housing material | PA black / transparent |
| Protection class | IP 65 |
| Field installation | pluggable on solenoid coil, plug seal not applicable |
| Operation temperature range | -20 °C – 60 °C |
| Storage temperature range | -25 °C ... 80 °C |
| Dimensions (w × h × d) | 29.5 × 41.5 × 45.0 mm |
| Weight (kg/piece) | 0.010 |
| Standards | EN 175301-803 (DIN 43 650), ISO 4400 |

29.01.2017 – Subject to technical modification

Part-No. 700897

USA: LUTZE INC.

13330 South Ridge Drive • Charlotte, NC 28273, USA
Tel. +1 (704) 504-0222 • Fax +1 (704) 504-0223
www.lutze.com • info@lutze.com

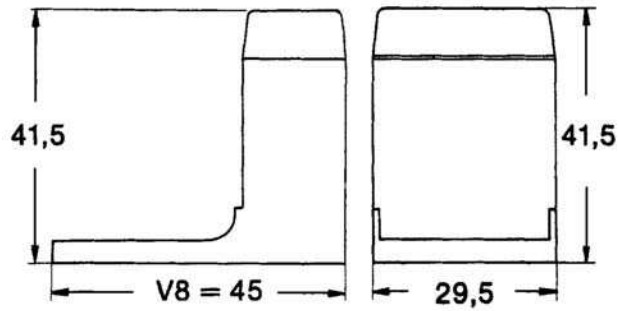
United Kingdom: LÜTZE Ltd.

Unit 3, Sandy Hill Park
Sandy Way, Amington • GB-Tamworth, Staffs B77 4DU
Tel. +44 (0)1827 31333-0 • Fax +44 (0)1827 31333-2
www.lutze.com • sales.gb@lutze.co.uk

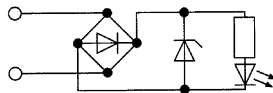


SYSTEMATIC TECHNOLOGY

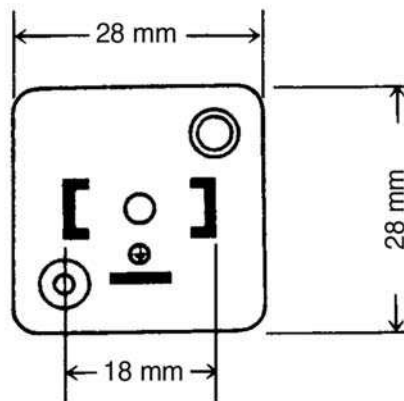
Dimensions



PIN assignment



Contact arrangement



29.01.2017 – Subject to technical modification

Part-No. 700897

USA: LUTZE INC.

13330 South Ridge Drive • Charlotte, NC 28273, USA

Tel. +1 (704) 504-0222 • Fax +1 (704) 504-0223

www.lutze.com • info@lutze.com

United Kingdom: LÜTZE Ltd.

Unit 3, Sandy Hill Park

Sandy Way, Amington • GB-Tamworth, Staffs B77 4DU

Tel. +44 (0)1827 31333-0 • Fax +44 (0)1827 31333-2

www.lutze.com • sales.gb@lutze.co.uk