



Identification	Type	LV-S11-0953 AC/DC 24V
	Part-No.	700953

Technical data

Function type	Suppressor for Switch Gear
Protection device	Varistor + LED
Nominal voltage	AC/DC 24 V
Shut-off points	≤100 V
Rated frequency	50–60 Hz
Holding capacitance	7 VA

General

Form	S11
Status indication LED	LED yellow
Housing material	PA
Protection class	IP 20
Field installation	attachable to switches
Termination	Plug contact
Operation temperature range	-25 °C – 60 °C
Storage temperature range	-40 °C ... 90 °C
Dimensions (w × h × d)	8.5 × 32.0 × 28.0 mm
Weight (kg/piece)	0.005
Approvals	cURus

29.01.2017 – Subject to technical modification

Part-No. 700953

USA: LUTZE INC.

13330 South Ridge Drive • Charlotte, NC 28273, USA
Tel. +1 (704) 504-0222 • Fax +1 (704) 504-0223
www.lutze.com • info@lutze.com

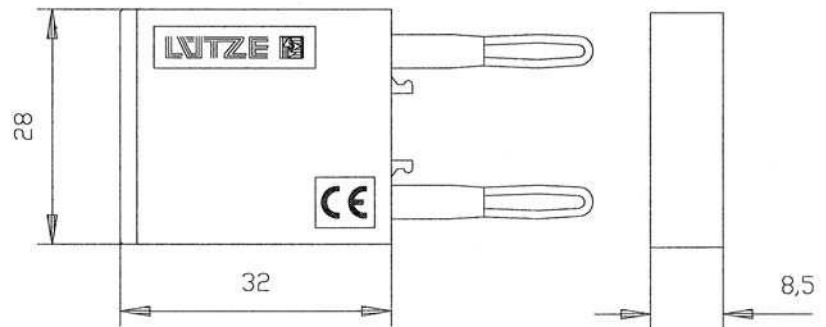
United Kingdom: LÜTZE Ltd.

Unit 3, Sandy Hill Park
Sandy Way, Amington • GB-Tamworth, Staffs B77 4DU
Tel. +44 (0)1827 31333-0 • Fax +44 (0)1827 31333-2
www.lutze.com • sales.gb@lutze.co.uk

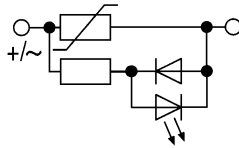


SYSTEMATIC TECHNOLOGY

Dimensions



PIN assignment



Mounting diagram



Symbols



29.01.2017 – Subject to technical modification

Part-No. 700953

USA: LUTZE INC.

13330 South Ridge Drive • Charlotte, NC 28273, USA
Tel. +1 (704) 504-0222 • Fax +1 (704) 504-0223
www.lutze.com • info@lutze.com

United Kingdom: LÜTZE Ltd.

Unit 3, Sandy Hill Park
Sandy Way, Amington • GB-Tamworth, Staffs B77 4DU
Tel. +44 (0)1827 31333-0 • Fax +44 (0)1827 31333-2
www.lutze.com • sales.gb@lutze.co.uk