



Suppressor for Switch Gear
Universal Suppressor Module
Enclosure type: S7A
Protection device: RC combination

The shape of the housing makes it ideal for installation on a harness.

Identification	Type	LRC-S7A-6161 AC 230V 10VA
	Part-No.	706161

Technical data

Function type	Suppressor for Switch Gear
Protection device	RC combination
Nominal voltage	AC 115 / 230 V
Rated frequency	50–60 Hz
Holding capacitance	10 VA

General

Form	S7A
Housing material	PPE/SB
Protection class	IP 67
Field installation	Cable ties are used for fastening to the harness
Termination	2 open cable ends AWG 22 / 80 mm / black
Operation temperature range	0 °C – 60 °C
Dimensions (w × h × d)	17.1 × 35.5 × 12.6 mm
Weight (kg/piece)	0.010
Approvals	cURus, VDE

29.01.2017 – Subject to technical modification

Part-No. 706161

USA: LUTZE INC.

13330 South Ridge Drive • Charlotte, NC 28273, USA
Tel. +1 (704) 504-0222 • Fax +1 (704) 504-0223
www.lutze.com • info@lutze.com

United Kingdom: LÜTZE Ltd.

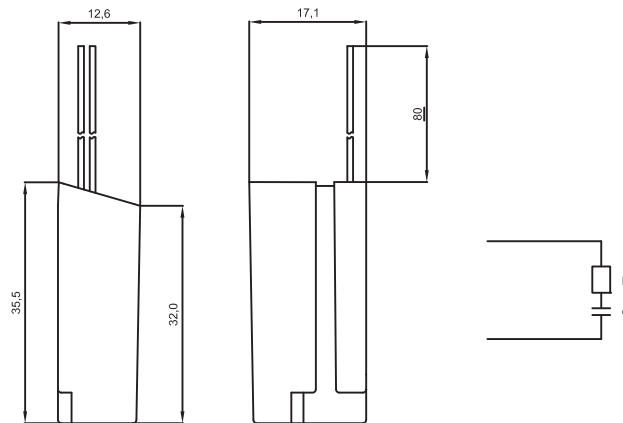
Unit 3, Sandy Hill Park
Sandy Way, Amington • GB-Tamworth, Staffs B77 4DU
Tel. +44 (0)1827 31333-0 • Fax +44 (0)1827 31333-2
www.lutze.com • sales.gb@lutze.co.uk



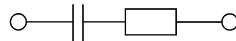
SYSTEMATIC TECHNOLOGY

Technical data sheet • Suppression Technology

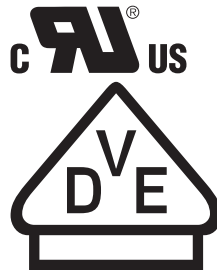
Dimensions



PIN assignment



Symbols



29.01.2017 – Subject to technical modification

Part-No. 706161

USA: LUTZE INC.

13330 South Ridge Drive • Charlotte, NC 28273, USA
Tel. +1 (704) 504-0222 • Fax +1 (704) 504-0223
www.lutze.com • info@lutze.com

United Kingdom: LÜTZE Ltd.

Unit 3, Sandy Hill Park
Sandy Way, Amington • GB-Tamworth, Staffs B77 4DU
Tel. +44 (0)1827 31333-0 • Fax +44 (0)1827 31333-2
www.lutze.com • sales.gb@lutze.co.uk