

regulated, 40 W



Identification	Type	CPSF-1-40-24
	Part-No.	722787
Description	Primary switchmode power supply, PFC, Single-phase, Class 2 Input: wide-range input AC 90–264 V, DC 120–370 V Output: DC 24 V	

25.08.2017 – Subject to technical modification

Part-No. 722787

USA: LUTZE INC.

13330 South Ridge Drive • Charlotte, NC 28273, USA
Tel. +1 (704) 504-0222 • Fax +1 (704) 504-0223
www.lutze.com • info@lutze.com

United Kingdom: LÜTZE Ltd.

Unit 3, Sandy Hill Park
Sandy Way, Amington • GB-Tamworth, Staffs B77 4DU
Tel. +44 (0)1827 31333-0 • Fax +44 (0)1827 31333-2
www.lutze.com • sales.gb@lutze.co.uk



SYSTEMATIC TECHNOLOGY

Technical data sheet - Power supply

Input

Number of phases	1
Rated voltage U_N	AC 115/230 V
Operation voltage range	AC 90–264 V / DC 120–370 V (DC 300 V, UL508)
Line frequency	47 – 63 Hz
Rated current I_N	0.9 A @ AC 100 V / 0.5 A @ .AC 240 V
Inrush current	<30 A
Internal fuse	T 2 A/AC 250 V
External fuse	Mini-circuit breaker: <4 A
Power Factor Correction P.F.C.	>0.6

Output

Rated voltage U_N	DC 24.00 V
Rated current I_N	2.00 A
Max. output current	3.5 A @ 24 V
Heat dissipation	<6 W
Accuracy	±1 %
Load regulation	<0.5 %
Ripple and Noise	<50 mV pp
Hold up time	>20 ms @ AC 120 V / >60 ms @ AC 240 V
Status indication DC ON LED green	yes
Status indication DC LOW LED red	No
Parallel / redundant mode	max. 2 devices / via external decoupling diodes e.g. 722987
Efficiency	>85 % @ AC 120 V / >87 % @ AC 240 V
Over voltage protection	yes
Rated over load protection	yes
Short circuit	Hiccup Mode

General

Switching frequency	approx. 110 kHz
Insulation voltage input / output	AC 3.0 kV _{eff}
Insulation voltage input / ground	class 2, without PE
Insulation voltage output / ground	class 2, without PE
Derating	>55 °C: -0.35 W/°C
Operation temperature range	-20 °C ... +70 °C (Derating)
Storage temperature range	-25 °C ... +85 °C
MTBF	750000 h: SN29500 / 250000 h: MIL HDBK 217F
Relative air humidity	20 – 90 % RH, not condensing
Cooling	Air convection, 20 mm distance top/bottom, 10 mm side
Housing material	Noryl (UL 94 V-0)
Mounting	DIN rail mountable TS35 (EN 60715)

25.08.2017 – Subject to technical modification

Part-No. 722787

USA: LUTZE INC.

13330 South Ridge Drive • Charlotte, NC 28273, USA
Tel. +1 (704) 504-0222 • Fax +1 (704) 504-0223
www.lutze.com • info@lutze.com

United Kingdom: LÜTZE Ltd.

Unit 3, Sandy Hill Park
Sandy Way, Amington • GB-Tamworth, Staffs B77 4DU
Tel. +44 (0)1827 31333-0 • Fax +44 (0)1827 31333-2
www.lutze.com • sales.gb@lutze.co.uk

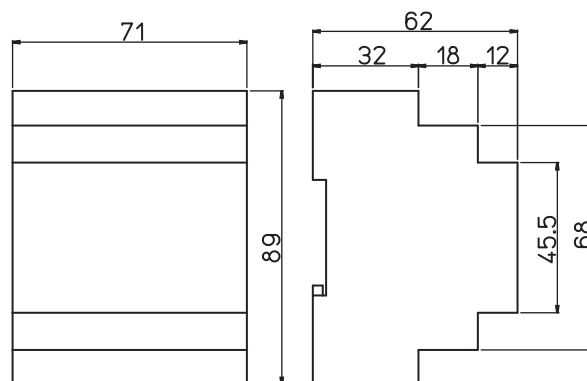


SYSTEMATIC TECHNOLOGY

Technical data sheet · Power supply

Installation position	vertical
Protection class	IP20 (IEC 529, EN 60529)
Protection class	II (SELV, PELV)
Over voltage category	II
Degree of pollution	2
Weight	0.200 kg/piece
Connection device	Screw terminal 0.20 mm ² – 2.5 mm ² max. 0.56 Nm
Dimensions (w × h × d)	71.0 × 89.0 × 62.0 mm
Approvals	cULus (E249179)
Standards	IEC 950 EN 60950 UL 60950 EN 61000-4-2/3/4/5/6/11 EN 61000-6-2 EN 61000-6-4 EN 50178 EN 61558 EN 61000-3-2 EN 50081-1 EN 50082-2 EN 55022 EN 55022 Class B EN 55011B
PU	1 piece

Dimensions



25.08.2017 – Subject to technical modification

Part-No. 722787

USA: LUTZE INC.

13330 South Ridge Drive • Charlotte, NC 28273, USA
Tel. +1 (704) 504-0222 • Fax +1 (704) 504-0223
www.lutze.com • info@lutze.com

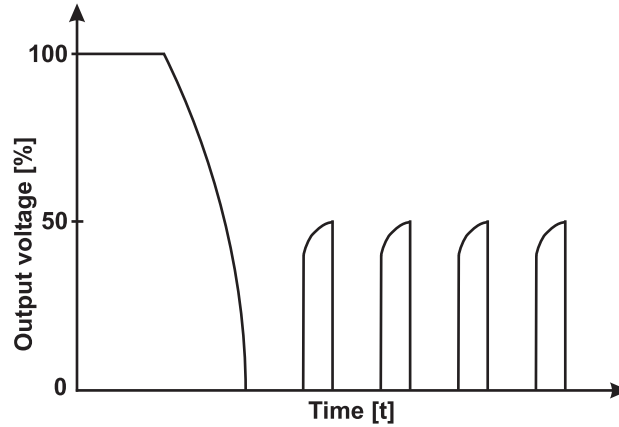
United Kingdom: LÜTZE Ltd.

Unit 3, Sandy Hill Park
Sandy Way, Amington • GB-Tamworth, Staffs B77 4DU
Tel. +44 (0)1827 31333-0 • Fax +44 (0)1827 31333-2
www.lutze.com • sales.gb@lutze.co.uk



SYSTEMATIC TECHNOLOGY

Short circuit characteristics



25.08.2017 – Subject to technical modification

Part-No. 722787

USA: LUTZE INC.

13330 South Ridge Drive · Charlotte, NC 28273, USA

Tel. +1 (704) 504-0222 · Fax +1 (704) 504-0223

www.lutze.com · info@lutze.com

United Kingdom: LÜTZE Ltd.

Unit 3, Sandy Hill Park

Sandy Way, Amington · GB-Tamworth, Staffs B77 4DU

Tel. +44 (0)1827 31333-0 · Fax +44 (0)1827 31333-2

www.lutze.com · sales.gb@lutze.co.uk



SYSTEMATIC TECHNOLOGY