



Identification	Type	OT 7-0350
	Part-No.	760350
Input		
Input voltage range	77.0 V – 253.0 V	
Interrupting voltage	<20 V	
Protection device	Varistor	
Status Indication	LED yellow	
Load Side		
Switching element	Transistor	
Min. switching voltage	DC 10 V	
Max. switching voltage	DC 48 V	
Min. switching current	10 mA	
Max. switching current	0.5 A	
Leakage current	50 µA	
Switch-on delay	< 2 ms	
Switch-off delay	<1 ms	
Switching frequency	1 kHz	
Protection device output	Suppressor diode	
General		
Housing material	PA, UL 94-V0	

03.04.2016 – Subject to technical modification

Part-No. 760350

USA: LUTZE INC.

13330 South Ridge Drive • Charlotte, NC 28273, USA
 Tel. +1 (704) 504-0222 • Fax +1 (704) 504-0223
 www.lutze.com • info@lutze.com

United Kingdom: LUTZE Ltd.

Unit 3, Sandy Hill Park
 Sandy Way, Amington • GB-Tamworth, Staffs B77 4DU
 Tel. +44 (0)1827 31333-0 • Fax +44 (0)1827 31333-2
 www.lutze.com • sales.gb@lutze.co.uk

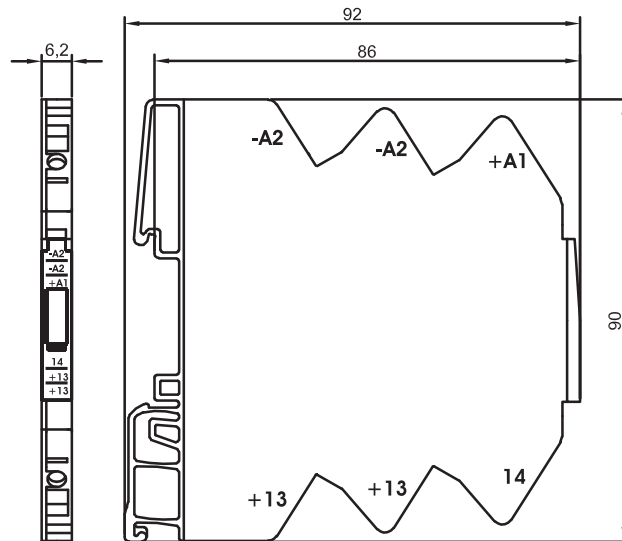


SYSTEMATIC TECHNOLOGY

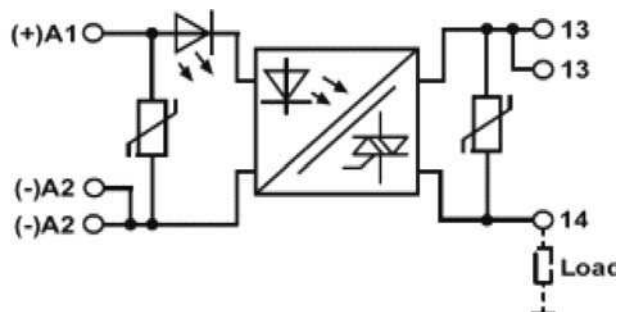
Technical data sheet • Interface Technology

Protection class	IP 20
Field installation	rail TS 35 (EN 50022)
Insulation voltage input/output	4.0 kV _{eff} 76x350
Safe isolation	yes
Operation temperature range	-25 °C – 70 °C
Storage temperature range	-40 °C – 80 °C
Dimensions (w × h × d)	6.2 × 90.0 × 92.5 mm
Weight (kg/piece)	0.030
Termination	Screw terminal: 0.14–1.5 mm ²

Dimensions



PIN assignment



Accessories

03.04.2016 – Subject to technical modification

Part-No. 760350

USA: LUTZE INC.

13330 South Ridge Drive • Charlotte, NC 28273, USA
Tel. +1 (704) 504-0222 • Fax +1 (704) 504-0223
www.lutze.com • info@lutze.com

United Kingdom: LUTZE Ltd.

Unit 3, Sandy Hill Park
Sandy Way, Amington • GB-Tamworth, Staffs B77 4DU
Tel. +44 (0)1827 31333-0 • Fax +44 (0)1827 31333-2
www.lutze.com • sales.gb@lutze.co.uk

Technical data sheet - Interface Technology

Accessories	Color	Article number	Type	PU
Tag holder 4x11 mm	white	681313	BZT -0411	100
Isolation plate		760809	TP 7-0809	5
Labels for laser printer A4 unpunched		681031	LEB-A4	1

Accessories

Accessories	Color	2-pole	3-pole	4-pole	8-pole	16-pole	PU
6 A jumper comb	red	762802	762805	762812	762822	762832	10
6 A jumper comb	white	762803	762806	762813	762823	762833	10
6 A jumper comb	blue	762804	762807	762814	762824	762834	10

03.04.2016 – Subject to technical modification

Part-No. 760350

USA: LUTZE INC.

13330 South Ridge Drive • Charlotte, NC 28273, USA

Tel. +1 (704) 504-0222 • Fax +1 (704) 504-0223

www.lutze.com • info@lutze.com

United Kingdom: LUTZE Ltd.

Unit 3, Sandy Hill Park

Sandy Way, Amington • GB-Tamworth, Staffs B77 4DU

Tel. +44 (0)1827 31333-0 • Fax +44 (0)1827 31333-2

www.lutze.com • sales.gb@lutze.co.uk



SYSTEMATIC TECHNOLOGY