



Identification	Type	OT 6-1105 DC 24V
	Part-No.	761105
Input		
Input voltage range	11.0 V – 30.0 V	
Rated current	18.0 mA	
Interrupting voltage	11 V11 V	
Protection device	Bridge rectifier	
Status Indication	LED yellow	
Load Side		
Switching element	Transistor, short circuit-proof	
Min. switching voltage	DC 10 V	
Max. switching voltage	DC 30 V	
Min. switching current	DC 500 mA	
Max. switching current	DC 5 A	
Leakage current	<20 µA	
Switch-on delay	260 µs	
Switch-off delay	3.5 ms	
Switching frequency	<500 Hz	
Protection device output	Supressor diode	
General		

03.04.2016 – Subject to technical modification

Part-No. 761105

USA: LUTZE INC.

13330 South Ridge Drive · Charlotte, NC 28273, USA
 Tel. +1 (704) 504-0222 · Fax +1 (704) 504-0223
 www.lutze.com · info@lutze.com

United Kingdom: LUTZE Ltd.

Unit 3, Sandy Hill Park
 Sandy Way, Amington · GB-Tamworth, Staffs B77 4DU
 Tel. +44 (0)1827 31333-0 · Fax +44 (0)1827 31333-2
 www.lutze.com · sales.gb@lutze.co.uk

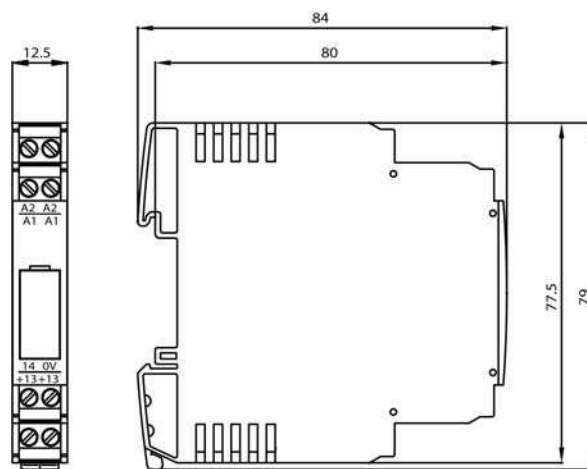


SYSTEMATIC TECHNOLOGY

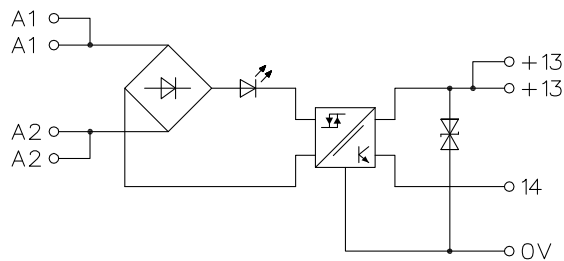
Technical data sheet · Interface Technology

Housing material	PPE
Protection class	IP 20
Field installation	rail TS 35 (EN 50022)
Insulation voltage input/output	4.0 kV _{eff}
Clearance/creep. dist. (control/load side)	>5.5 mm
Safe isolation	yes
Operation temperature range	-25 °C – 70 °C
Storage temperature range	-40 °C – 80 °C
Dimensions (w × h × d)	12.5 × 79.0 × 84.0 mm
Weight (kg/piece)	0.049
Approvals	cULus
Termination	Spring terminal 0.25–2.5 mm ²

Dimensions



PIN assignment



03.04.2016 – Subject to technical modification

Part-No. 761105

USA: LUTZE INC.

13330 South Ridge Drive · Charlotte, NC 28273, USA
 Tel. +1 (704) 504-0222 · Fax +1 (704) 504-0223
 www.lutze.com · info@lutze.com

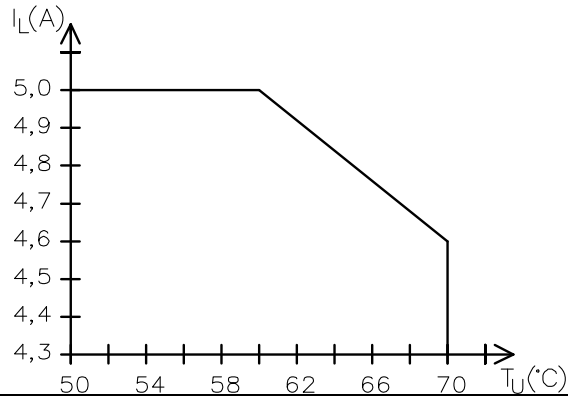
United Kingdom: LUTZE Ltd.

Unit 3, Sandy Hill Park
 Sandy Way, Amington · GB-Tamworth, Staffs B77 4DU
 Tel. +44 (0)1827 31333-0 · Fax +44 (0)1827 31333-2
 www.lutze.com · sales.gb@lutze.co.uk



SYSTEMATIC TECHNOLOGY

Derating



Accessories

Accessories	Color	Article number	Type	PU
Tag holder 7×20 mm	white	760968	BZT-0720	100
Labels for laser printer 6,35x15,24mm (Sheet with 528 labels)		681033	LEB-0615	1

03.04.2016 – Subject to technical modification

Part-No. 761105

USA: LUTZE INC.

13330 South Ridge Drive • Charlotte, NC 28273, USA
 Tel. +1 (704) 504-0222 • Fax +1 (704) 504-0223
 www.lutze.com • info@lutze.com

United Kingdom: LUTZE Ltd.

Unit 3, Sandy Hill Park
 Sandy Way, Amington • GB-Tamworth, Staffs B77 4DU
 Tel. +44 (0)1827 31333-0 • Fax +44 (0)1827 31333-2
 www.lutze.com • sales.gb@lutze.co.uk



SYSTEMATIC TECHNOLOGY