

Technical data sheet - Accessories

Tag label

Identification	Type	REM WT-0907
	Part-No.	770907

General

Housing material	Makrolon
Color	transparent
Class of flammability according to UL 94	V2
Surface	smooth
Operation temperature range	-40 °C – 80 °C
Storage temperature range	-20 °C – 60 °C
Dimensions (w × h × d)	17.3 × 31.0 × 11.8 mm
Weight (kg/piece)	0.003
Termination	Varioprint

03.04.2016 – Subject to technical modification

Part-No. 770907

USA: LUTZE INC.

13330 South Ridge Drive • Charlotte, NC 28273, USA
Tel. +1 (704) 504-0222 • Fax +1 (704) 504-0223
www.lutze.com • info@lutze.com

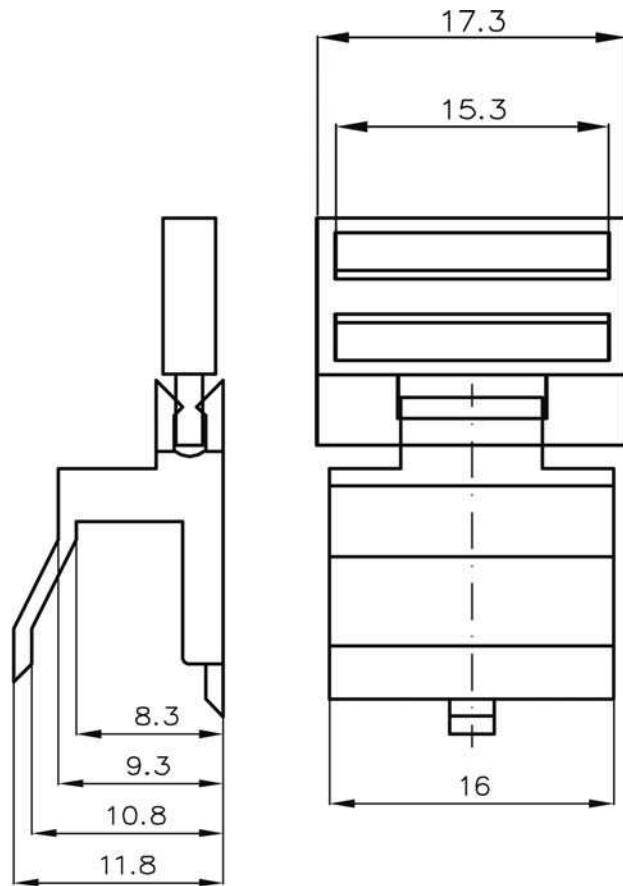
United Kingdom: LUTZE Ltd.

Unit 3, Sandy Hill Park
Sandy Way, Amington • GB-Tamworth, Staffs B77 4DU
Tel. +44 (0)1827 31333-0 • Fax +44 (0)1827 31333-2
www.lutze.com • sales.gb@lutze.co.uk



SYSTEMATIC TECHNOLOGY

Dimensions



03.04.2016 – Subject to technical modification

Part-No. 770907

USA: LUTZE INC.

13330 South Ridge Drive • Charlotte, NC 28273, USA
Tel. +1 (704) 504-0222 • Fax +1 (704) 504-0223
www.lutze.com • info@lutze.com

United Kingdom: LUTZE Ltd.

Unit 3, Sandy Hill Park
Sandy Way, Amington • GB-Tamworth, Staffs B77 4DU
Tel. +44 (0)1827 31333-0 • Fax +44 (0)1827 31333-2
www.lutze.com • sales.gb@lutze.co.uk