



Identification	Type Part-No.	LCOS-ZB-PM-350-00-1 780910.350.3
Description	Power module AC/DC 500 V/16 A per phase 4-pin, 35 mm	
Use/Application/Properties	Description Power module 35 mm	
General	Connection device Power bridge 1-pole Material PA 6.6 (UL 94 V0, NNF I2, F2) Operating voltage max. AC/DC 500 V Operating current max. AC/DC 16 A/phase System current max. AC/DC 64 A Mounting latches into position on LCOS function carrier 35 mm Contact material CuCrSiTi Pole number 4 Dimensions (w x h x d) 36.0 x 10.0 x 31.5 mm Weight 0.020 kg/piece	

25.08.2017 – Subject to technical modification

Part-No. 780910.350.3

USA: LUTZE INC.

13330 South Ridge Drive · Charlotte, NC 28273, USA
Tel. +1 (704) 504-0222 · Fax +1 (704) 504-0223
www.lutze.com · info@lutze.com

United Kingdom: LÜTZE Ltd.

Unit 3, Sandy Hill Park
Sandy Way, Amington · GB-Tamworth, Staffs B77 4DU
Tel. +44 (0)1827 31333-0 · Fax +44 (0)1827 31333-2
www.lutze.com · sales.gb@lutze.co.uk

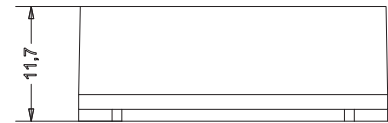
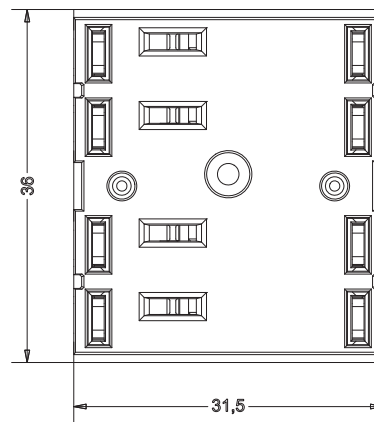
Technical data sheet · Load monitoring

Standards	IEC 60068-2-42, 43, 8, 27 EN 60064-1 EN 50175 EN 50124-1
Approvals	UR
PU	50 piece

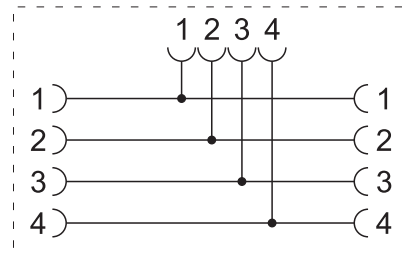
General ambient conditions

Operation temperature range	-40 °C ... +85 °C
Storage temperature range	-40 °C ... +85 °C
Relative air humidity	5 % – 95 % without condensation
Protection class	IP20
Shock resistance	15 g 11 ms acc. to IEC 60068-2-27
Vibration resistance	4 g acc. to EN 60068-2-8

Dimensions



PIN assignment



25.08.2017 – Subject to technical modification

Part-No. 780910.350.3

USA: LUTZE INC.

13330 South Ridge Drive · Charlotte, NC 28273, USA
Tel. +1 (704) 504-0222 · Fax +1 (704) 504-0223
www.lutze.com · info@lutze.com

United Kingdom: LÜTZE Ltd.

Unit 3, Sandy Hill Park
Sandy Way, Amington · GB-Tamworth, Staffs B77 4DU
Tel. +44 (0)1827 31333-0 · Fax +44 (0)1827 31333-2
www.lutze.com · sales.gb@lutze.co.uk



SYSTEMATIC TECHNOLOGY