

## VALVE PLUG SUPPRESSOR FORM BI - 11MM 90°

Diode and LED, 24VDC/50VA/W

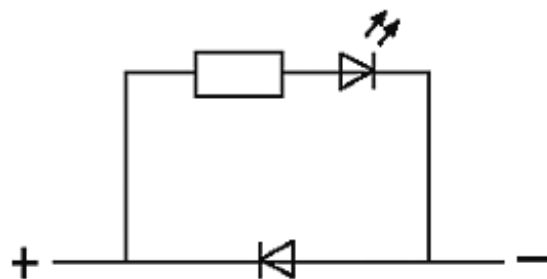
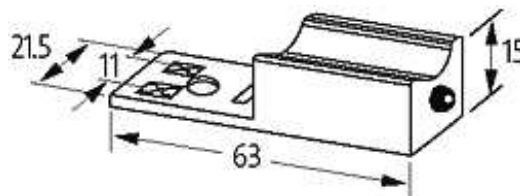
24 V DC

Diode + LED

Remove plug gasket when fitting adapter. Other LED colors on request. Note PIN arrangement (PE at cable outlet of connector). 180° turned version on request. Polarity dependent

### [Link to Product](#)

#### Illustration



## LED + Diode

Product may differ from Image

#### General data

The information in this brochure has been compiled with the utmost care.

Liability for the correctness completeness and topicality of the information is restricted to gross negligence. Version: 05/16

Murrelektronik GmbH | Falkenstraße 3, 71570 Oppenweiler | Fon +49 (71 91) 47-0, Fax +49 (71 91) 47-491000 | shop@murrelektronik.com | shop.murrelektronik.com

Housing	Polyamide black, flame retardant, temperature resistance up to 130 °C
Temperature range	-20...+60 °C
Contact material	Silvered bronze
Dimensions H × W × D	15×63×21.5 mm

**Technical Data**

Switch off delay time	max. 200 ms
Switch off peak	1 V
Max. power (W)	max. 50 W(VA)

**Commercial data**

country of origin	CZ
customs tariff number	85363010
minimum order quantity	1