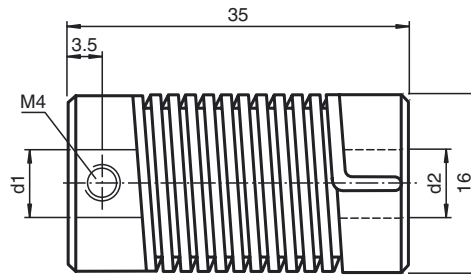




Dimensions



Model Number

9402 6*6

Spring steel coupling

Features

- Universally suitable for backlash-free rotation transmission
- Highly vibration-isolating
- Well misalignment compensation
- Low torsion spring stiffness
- Small reset forces
- No movable parts
- Very rugged construction

Technical data

Ambient conditions

Operating temperature -30 ... 120 °C (-22 ... 248 °F)

Mechanical specifications

Shaft diameter d1 = 6 mm , d2 = 6 mm

Material

Spring spring steel, nickel plated

End piece Diecast zinc

Mass 28 g

Rotational speed max. 3000 min

Max. torque 0.5 Nm

Radial offset max. ± 1 mm

Axial offset max. ± 1 mm

Angle error max. ± 5 °

Torsion angle at torque 0.25 Nm drive shaft view

CW rotation direction 50 °

CCW rotation direction 70 °

Moment of inertia 10 kg m² x 10⁻⁷

Mounting clamp screws M4 x 4, DIN 916

Tightening torque of clamping screws max. 1.5 Nm