



**Model Number**

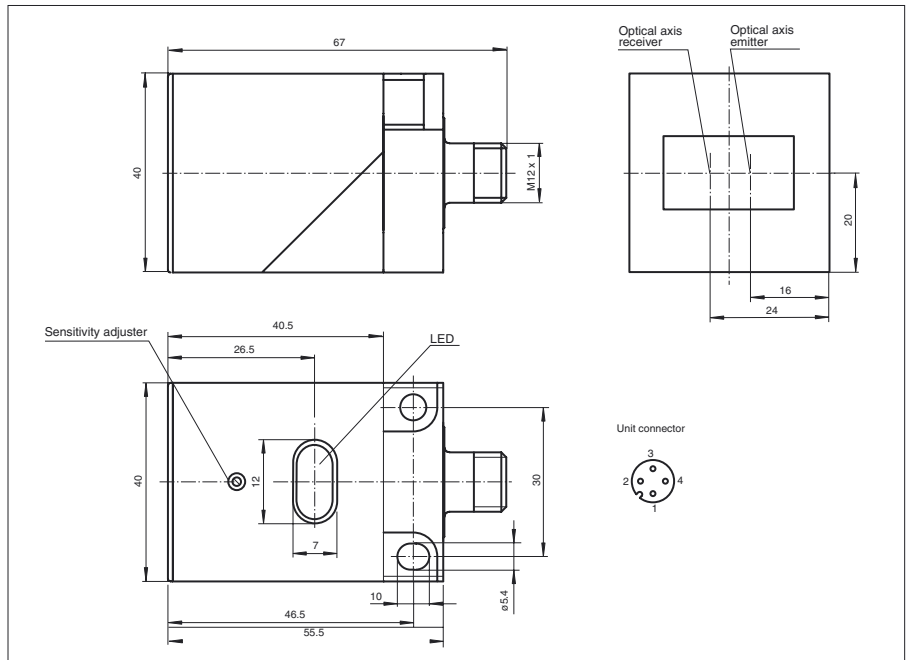
**OBT400-L2-E5-V1**

Diffuse mode sensor  
with 4-pin, M12 connector

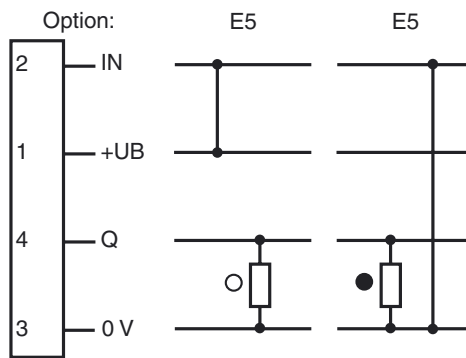
**Features**

- Pre-fault indication
- Visible red light
- Positioning of the sensor head is possible in two planes
- Protection degree IP67
- Mounting only with one tool: the screwdriver
- Light/dark ON, programmable

**Dimensions**



**Electrical connection**



○ = Light on  
● = Dark on

Release date: 2007-06-19 16:44 Date of issue: 2011-01-26 049789\_ENG.xml

## Technical data

### General specifications

|                      |                                |
|----------------------|--------------------------------|
| Detection range      | 0 ... 400 mm                   |
| Detection range min. | 0 ... 50 mm                    |
| Detection range max. | 0 ... 400 mm                   |
| Reference target     | standard white 200 mm x 200 mm |
| Light source         | LED                            |
| Light type           | modulated visible red light    |
| Approvals            | CE                             |
| Ambient light limit  | 15000 Lux                      |

### Indicators/operating means

|                  |  |
|------------------|--|
| Function display | LED yellow: switching state<br>LED red: pre-fault indication |
| Controls         | sensitivity adjustment                                       |

### Electrical specifications

|                                |       |                |
|--------------------------------|-------|----------------|
| Operating voltage              | $U_B$ | 10 ... 30 V DC |
| Ripple                         |       | 10 %           |
| No-load supply current         | $I_0$ | ≤ 20 mA        |
| Time delay before availability | $t_v$ | ≤ 20 ms        |

### Output

|                     |  |          |
|---------------------|--|----------|
| Switching type      | light/dark on  |          |
| Signal output       | 1 PNP output, short-circuit protected, protected from reverse polarity, open collector |          |
| Switching voltage   | max. 30 V DC   |          |
| Switching current   | max. 250 mA  |          |
| Switching frequency | $f$  | ≤ 200 Hz |
| Response time       |  | ≤ 2.5 ms |

### Standard conformity

|           |              |
|-----------|--------------|
| Standards | EN 60947-5-2 |
|-----------|--------------|

### Ambient conditions

|                     |                                |
|---------------------|--------------------------------|
| Ambient temperature | -25 ... 70 °C (-13 ... 158 °F) |
| Storage temperature | -40 ... 80 °C (-40 ... 176 °F) |

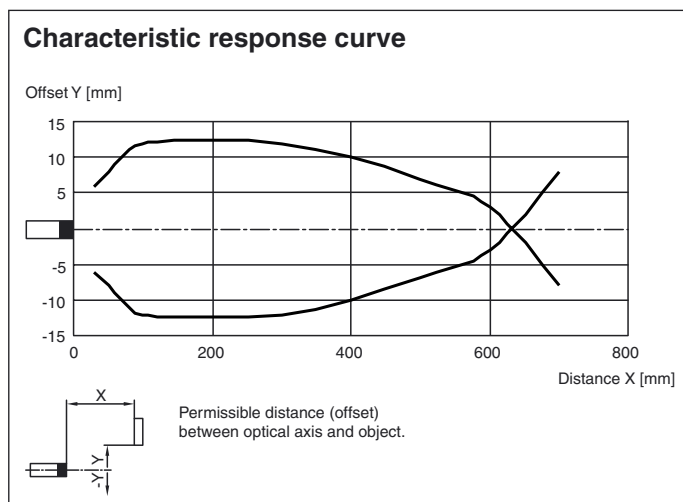
### Mechanical specifications

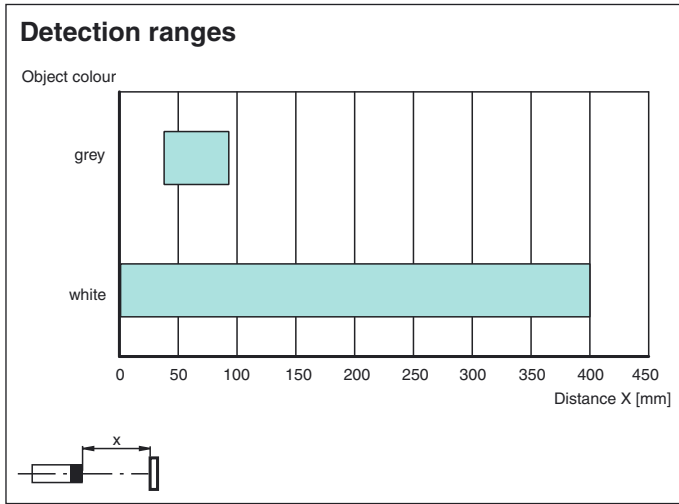
|                   |                                |
|-------------------|--------------------------------|
| Protection degree | IP67                           |
| Connection        | connector M12 x 1, 4-pin       |
| Material          |                                |
| Housing           | PBT                            |
| Optical face      | scratch resistant plastic lens |
| Mass              | 60 g                           |

### Approvals and certificates

|              |  |
|--------------|--|
| CCC approval | Products with a maximum operating voltage of ≤36 V do not bear a CCC marking because they do not require approval. |
|--------------|--|

## Curves/Diagrams





Release date: 2007-06-19 16:44 Date of issue: 2011-01-26 049789\_ENG.xml