



Model number

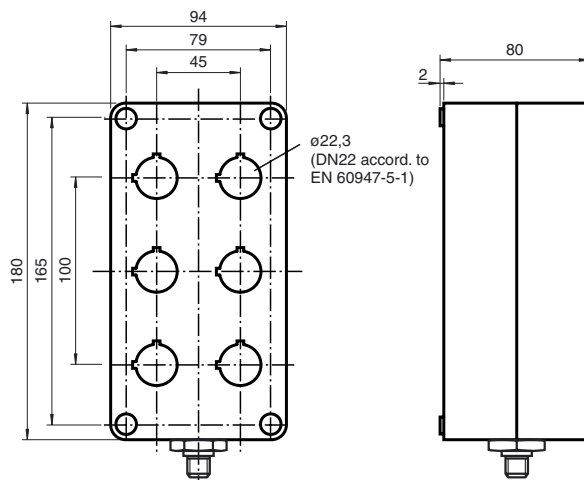
VAA-LT3-F86-V1

Luminous push-button module
4 inputs/4 outputs

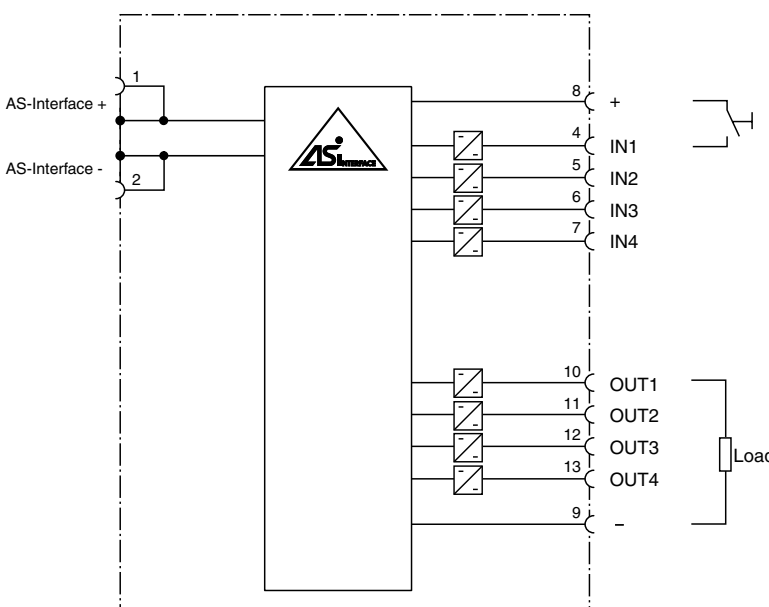
Features

- Empty housing for the installation of up to 6 built-in buttons, built-in lamps or similar with diameter 22 mm
- Connection of the illuminated push-buttons via pluggable screw terminals
- Protection degree IP65 possible
- Integrated communication monitoring function
- Inputs and outputs short-circuit and overload proof
- No external power supply required
- M12 plug for simple connection to AS-Interface

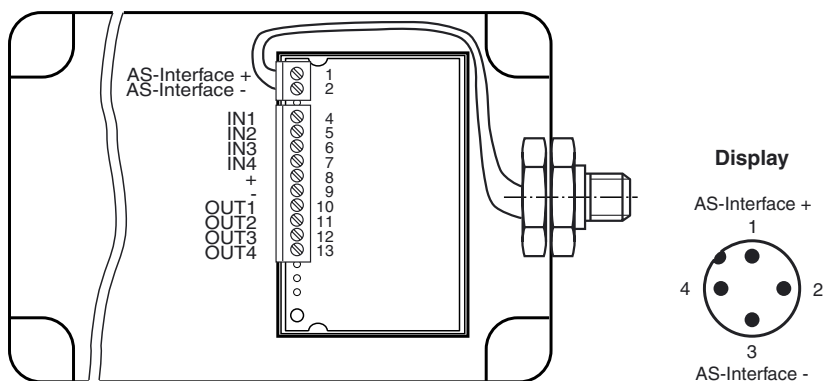
Dimensions



Electrical connection



Indicating / Operating means



Release date: 2009-01-13 15:33 Date of issue: 2014-01-13 126688_eng.xml

Technical data**General specifications**

Slave type	Standard slave
AS-Interface specification	V2.0
Required master specification	≥ V2.0

Electrical specifications

Rated operating voltage	U_e	26.5 ... 31.6 V from AS-Interface
Rated operating current	I_e	≤ 30 mA (without sensors) / max. 180 mA
Protection class		III

Input

Number/Type	4 inputs for mechanical contacts
Supply	from AS-Interface
Voltage	21 ... 31 V
Input current	≤ 8 mA (limited internally)
Switching point	according to EN 61131-2 Typ 1
0 (unattenuated)	≤ 1.5 mA
1 (attenuated)	≥ 4 mA

Output

Number/Type	4 electronic outputs, PNP
Supply	from AS-Interface
Current	≤ 100 mA per output, ≤ 140 mA total
Voltage	21 ... 31 V

Programming instructions

Profile	S-7.0
IO code	7
ID code	0
ID1 code	F
ID2 code	E

Data bits (function via AS-Interface)	input	output
D0	IN1	OUT1
D1	IN2	OUT2
D2	IN3	OUT3
D3	IN4	OUT4

Parameter bits (programmable via AS-i) function

P0	not used
P1	not used
P2	not used
P3	not used

Ambient conditions

Ambient temperature	-25 ... 40 °C (-13 ... 104 °F)
Storage temperature	-40 ... 85 °C (-40 ... 185 °F)

Mechanical specifications

Protection degree	IP65 in accordance with EN 60529 (with corresponding displays and controls)
Connection	M12 round connector

Notes

LED displays should be used preferably, in order to avoid an exceeding of the max. current.

Function

The VAA-LT3-F86-V1 light sensor module creates a connection between the operating personnel and the AS-Interface master. The housing is designed in combination with suitable display and control elements in protection type IP65.

The internal AS-Interface I/O module is ideally suited to integrating customer-specific electronics, for example light sensors or LED lights. The printed circuit board is supplied entirely from the AS-Interface. The inputs and outputs are protected against short circuits and overload and the connection between the display and control elements and the AS-Interface circuit board can be plugged in with screw-on plug-in terminals. The connection to the AS-Interface is implemented by means of a V1 round plug (M12 x 1).

An overloading of the outputs is signalled to the AS-Interface master via the "Peripheral fault" function. Communication via the AS-Interface remains intact.

The luminous push-button module can be expanded to a total of 8 inputs/8 outputs by means of an additional printed circuit board module VAA-4E4A-CB1-Z/E2.

Note:

Communication monitoring is integrated. This switches the outputs to a currentless state if no communication is taking place over the AS-Interface cable.

Accessories**VAA-4E4A-CB1-Z/E2**

Printed circuit board module encapsulated in housing for expansion to 8 inputs/8 outputs

VAZ-T1-FK-V1

Splitter box AS-Interface to 1x M12 round connector

VAZ-T1-FK-1M-PUR-V1-W

Splitter box AS-Interface to M12 round connector