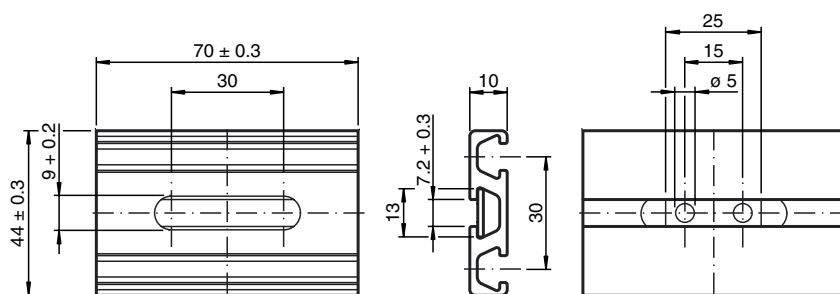


## Dimensions



## Model Number

**MH 02-L-Y133760**

Mounting aid

## Features

- Suitable for VariKont-L sensors
- Simple and fast mounting
- Sensor can be mounted length or crosswise on the profile section
- Maximum range of adjustment: 60 mm

## Technical data

### Mechanical specifications

Material	Profile rail: aluminium Plate: aluminium
----------	---

## Note

### Instruction for installation

- Insert the M5 slotted cylindrical head screws provided in the sensor base and fix the sliding blocks to them and tighten with approx. 3 turns of the screws
- Slide the loosely attached sliding blocks into the profile section
- Position the sensor and fasten the screws

## Note

### Scope of delivery

- Mounting aid MH 02-L-Y133760, consisting of
- 1 profile rail (70 mm) with elongated hole (30 mm)
  - 2 sliding blocks (M5) for sensor mounting
  - 2 screws cylindric head (M5 x 42/ISO 4762) for sensor mounting
  - 1 aluminium plate (25 x 13 x 1,5) for mounting
  - 2 stainless steel self-tapping screw with slot (4,2 x 19/ISO 1481) for mounting
  - 2 lock washer (4,3 mm/DIN 6797 form A) for mounting