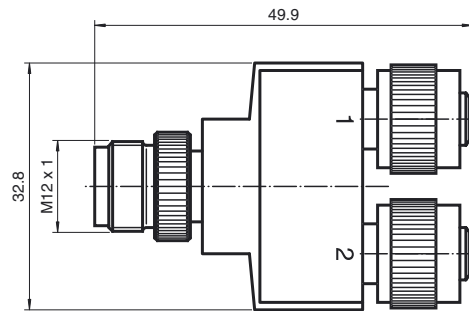


**Dimensions**



**Model Number**

**V11S-TV11**

Y distributor, M12 connector on M12 socket/socket

**Features**

- Simple assembling of 2 signals to one M12 plug-in station
- Suitable for normally open contacts or 1 signal from antivalent sensors

**Technical data**

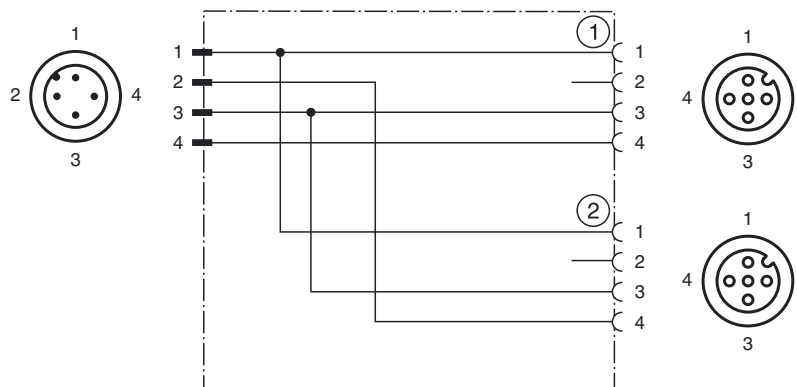
**General specifications**

Number of pins	3
Coding	A

**Mechanical specifications**

Connection	1 x M12 connector 1 x M12 socket / 1 x M12 socket
------------	--

**Electrical connection**



Release date: 2014-11-04 08:56 Date of issue: 2014-11-04 181617\_eng.xml