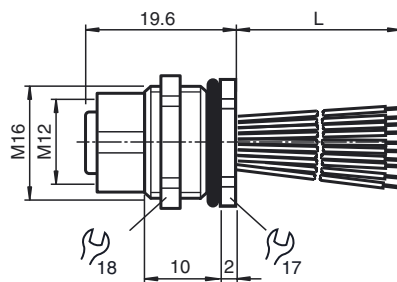




Dimensions



Model Number

V19-M16H-500
Receptacles, M12/M16, 8-pin

Features

- Rear/screw mounting

Accessories

LOCKNUT M16 NICKEL BRASS
Nut, nickel-plated brass

Technical data

General specifications

Number of pins	8
Connection 1	socket
Construction type 1	straight
Threading 1	M12
Connection 2	cable end

Electrical specifications

Operating voltage	U _B	max. 30 V DC
Test voltage		> 2000 V _{eff} AC
Operating current		max. 2 A
Volume resistance		< 3 mΩ
Insulation resistance		≥ 100 MΩ

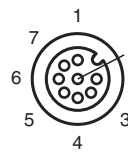
Ambient conditions

Ambient temperature	-25 ... 85 °C (-13 ... 185 °F) active
	-40 ... 85 °C (-40 ... 185 °F) fixed
Pollution Degree	3

Mechanical specifications

Degree of protection	IP65/IP67
Connection	Tinned copper single leads, Ø1.15 ±0.07 mm
Material	
Contacts	CuZn
Contact surface	Au
Threaded bushings	Zinc die-casting, nickel-plated
Seal	FKM
Core insulation	TPE
Cable	
Cores	8 x 0.25 mm ²
Conductor construction	14 x 0.15 mm Ø AWG 24
Length	L 500 mm
Installation	Rear mounting M16

Electrical connection



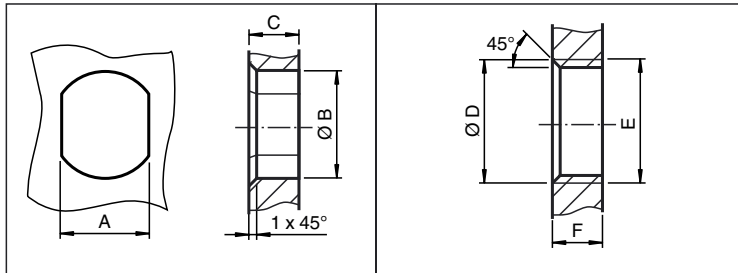
Release date: 2014-10-06 11:01 Date of issue: 2014-10-06 257469_eng.xml

Refer to "General Notes Relating to Pepperl+Fuchs Product Information".

Electrical connection

- 1) WH
- 2) BN
- 3) GN
- 4) YE
- 5) GY
- 6) PK
- 7) BU
- 8) RD

Installation Note



	A	B	C	D	E	F
M8	7.1 ^{+0.1}	Ø 8.2 ^{+0.1}	2 - 4 mm	-	M8x0.5	2 - 4 mm
M12	11 ^{+0.1}	Ø 12.2 ^{+0.1}	< 4 mm	-	M12x1	< 4.5 mm
M16	13.5 ^{+0.1}	Ø 16.1	< 4.5 mm	Ø 17 ^{+0.2}	M16x1.5	> 2.5 mm
M20	13.5 ^{+0.1}	Ø 20.1	-	Ø 20 ^{+0.2}	M20x1.5	< 6 mm
PG9	13.5 ^{+0.1}	Ø 15.3 ^{+0.1}	< 4.5 mm	Ø 16	PG9	> 2.5 mm
PG13.5	18.8 ^{+0.1}	Ø 20.5 ^{+0.1}	-	Ø 22 ^{±0.1}	PG13.5	-

Release date: 2014-10-06 11:01 Date of issue: 2014-10-06 257469_eng.xml