

### Model Number

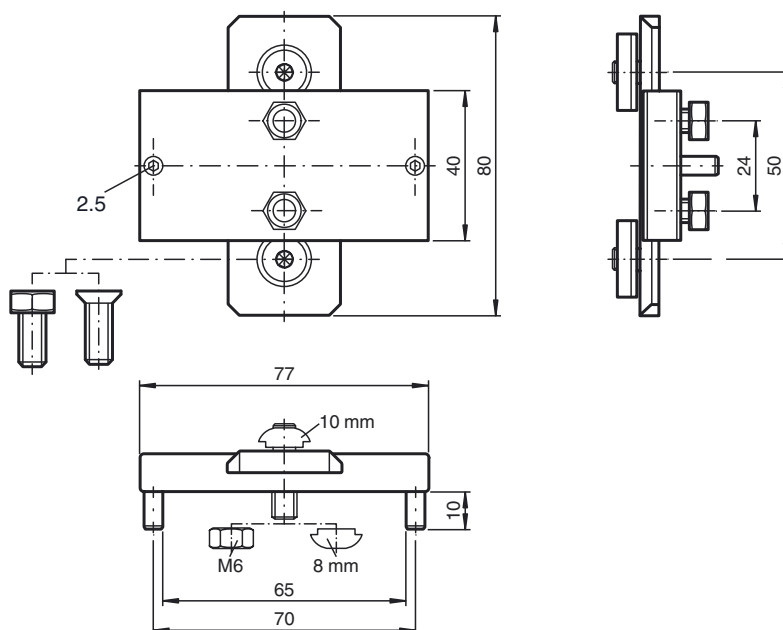
#### OMH-SLCT-11

Reverse clamp mounting suitable for 8.5 mm ... 10.5 mm groove

### Features

- Clamp
- Connects two parts with groove
- Suitable for rear mounting in cramped spaces
- Groove 8.5 mm ... 10.5 mm

### Dimensions



### Technical data

#### Ambient conditions

Ambient temperature	-40 ... 80 °C (-40 ... 176 °F)
Storage temperature	-40 ... 80 °C (-40 ... 176 °F)

#### Mechanical specifications

Material	
Housing	anodized aluminum
Mounting screw	Steel
Mass	approx. 126 g
Tightening torque, fastening screws	screws 2.5 Nm Headless screw 1.5 Nm

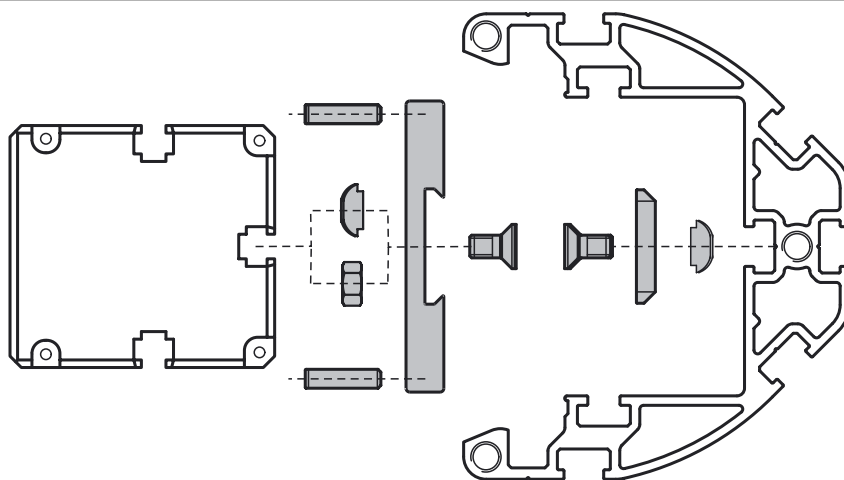
#### General information

Scope of delivery	Mounting aid ; 2 t-slides 8 mm ; 1 cylinder head screw M6x12 as antislip lock; Allen wrench SW3 ; SW5 Allen wrench ; Slotted plate
-------------------	--

#### Suitable series

Safety Series	OMH-SLCT-100 OMH-SLCT-110 SLP / SLC LGS / LGM
---------------	--

### Mechanical arrangement



### Recommendation

Use at least two mounting brackets for mounting. The distance between the two mounting bracket



ets must not exceed 600 mm.

### Slotted plate mounting aid

Each package comes with a slotted plate.

To prevent the t-slides from clipping into the upper hole, cover the hole with the slotted plate. Then slide the t-slides into the guide.

