



Model Number

MPZB06

Ball and Swivel Mounting Bracket

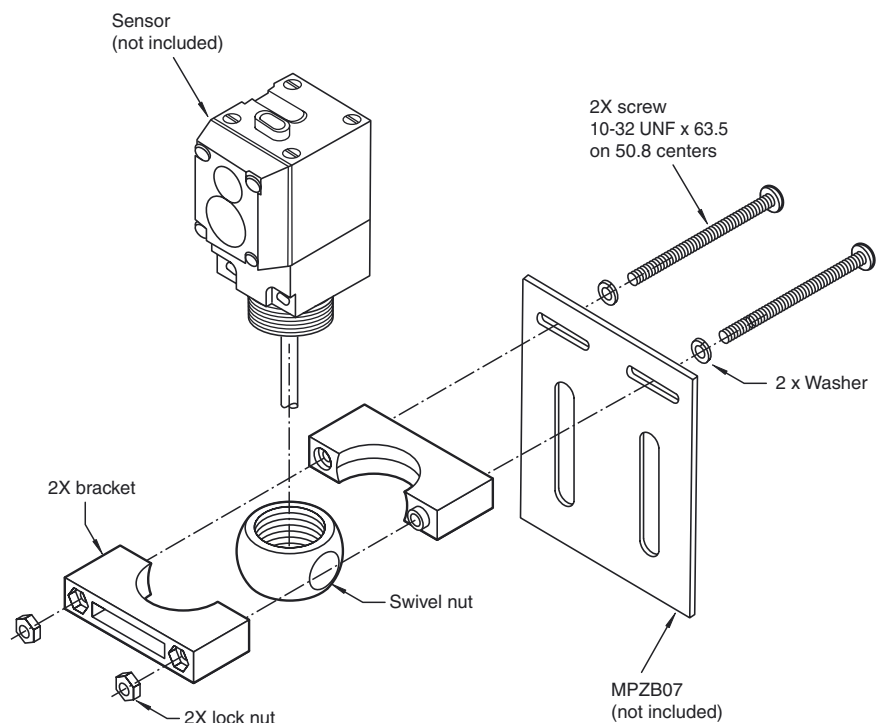
Features

- Mounting bracket
- Adjustable Bracket

Function

The basic ball and swivel mounting bracket (360° swivel, 10° tilt) consists of two plastic brackets and the spherical plastic swivel nut. The swivel nut has M30 threading for direct installation on the sensor's base, including on quick disconnect versions. The bracket can be directly mounted to a surface, or the MPZB07 mounting plate may be used.

Dimensions



Technical data

Mechanical specifications

Material	plastic
Mass	approx. 830 g

Suitable series

Series	Series 61 , MP Series
--------	-----------------------