

### Model Number

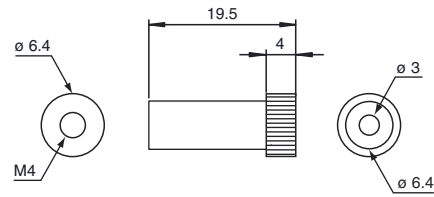
**K-LA06**

Collimation lens, increases operating range by up to eight times, M4 thread

### Features

- Collimation lens
- Thread M4
- increases operating range by up to eight times

### Dimensions



### Technical data

#### Ambient conditions

Ambient temperature -30 ... 200 °C (-22 ... 392 °F)

#### Mechanical specifications

Material plastic

Mass approx. 1 g

#### Suitable series

Series Fiberoptics