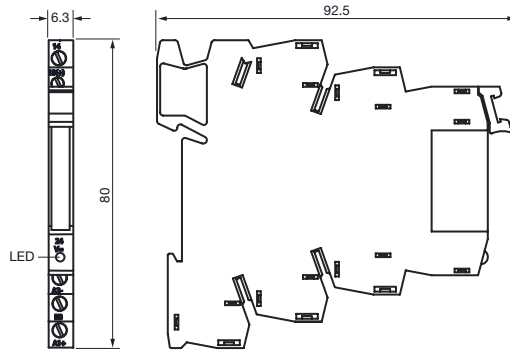
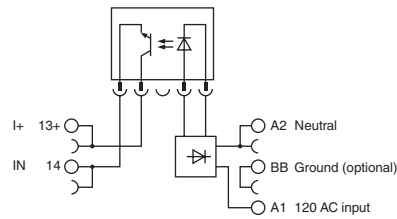


Dimensions



Electrical connection



Model number

VAZ-PLC-OSC-120UC/48DC/100/SEN

Optocoupler to convert 120 V inputs to 24 VDC

Features

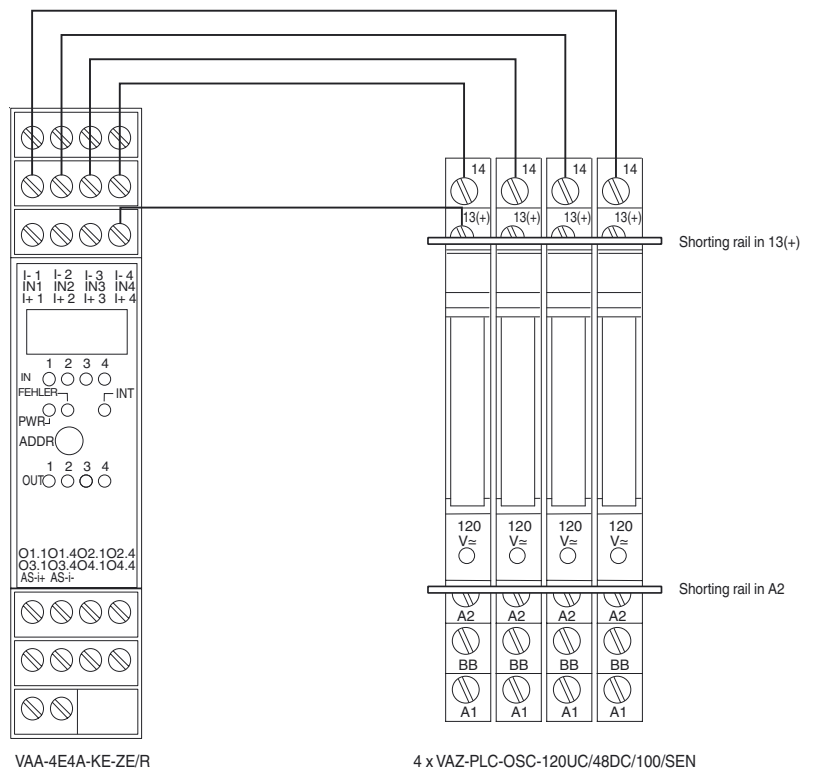
- AC or DC
- Converts any 120 V input signal to 24 V DC
- Narrow 6.3 mm housing

Accessories

VAZ-FBST 500-PLC GY

Shorting rail for use with VAZ-PLC-OSC-120UC/48DC/100/SEN

Electrical connection



Technical data

General specifications

Description	Optocoupler to convert 120 V inputs to 24 VDC
Input	
Voltage	96 ... 132 V AC / 88 ... 121 V DC
Input current	3.5 mA
Signal delay	6 ms
Signal frequency	10 Hz
Output	
Current limit	100 mA

Release date: 2013-05-21 15:48 Date of issue: 2014-01-13 910154_eng.xml

Refer to "General Notes Relating to Pepperl+Fuchs Product Information".

Pepperl+Fuchs Group
www.pepperl-fuchs.com

USA: +1 330 486 0001
fa-info@us.pepperl-fuchs.com

Germany: +49 621 776 4411
fa-info@de.pepperl-fuchs.com

Singapore: +65 6779 9091
fa-info@sg.pepperl-fuchs.com

Current	approx. 0 mA
Voltage	3 ... 48 V DC
Voltage drop	$U_d \leq 1 \text{ V}$
Mechanical specifications	
Protection degree	IP20
Connection	Terminals

Release date: 2013-05-21 15:48 Date of issue: 2014-01-13 910154_eng.xml