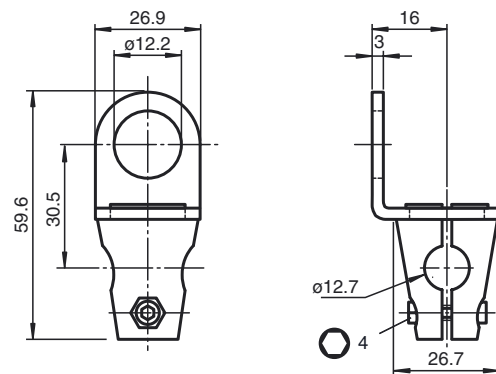




## Dimensions



## Model Number

**MH 01-M12**

Mounting brackets for sensors

## Features

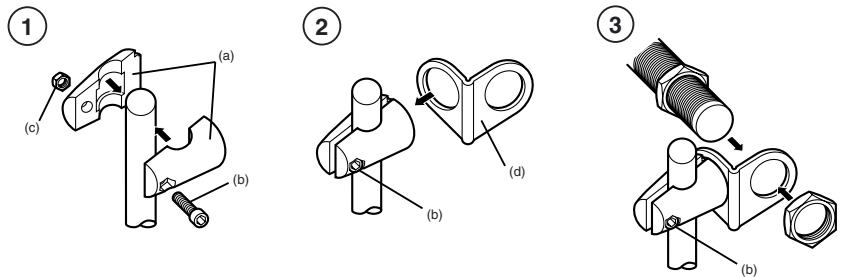
- Suitable for M12 sensors
- Simple and fast mounting

## Technical data

### Mechanical specifications

Material	Clamping cylinder: Diecast zinc Support bracket: Steel
Note	rod not included

## Installation instructions



- ① Fasten the two parts of the mounting clamp (a) loosely by means of the screw (b) and the nut (c) supplied.
- ② Attach the mounting bracket (d) and then tighten the screw (b) in such a way that the bracket can still be turned.
- ③ Tighten the screw fully after the sensor has been mounted and aligned.