

Description:

The EFDC pushbutton boxes are made of aluminium alloy. They are rectangular shaped and complete with a flat joint cover, which is fixed by hexagonal head screws and two threaded holes for cable entry. They are available in different configurations with pushbuttons, pilot lights (1" or 1/2"), switches and a potentiometer is installed.

Application:

The EFDC is designed to contain pushbuttons, pilot lights, selector switches, potentiometers combined in several configurations and as command pushbutton.

Material:

Body and cover: copper free aluminium alloy.
Screws: stainless steel.

Certification characteristics:

Type of Protection: II 2GD EEx d IIB, II 2G Ex d IIB+H₂.
Class of Temperature: T6 / T85 °C → T4 / T135 °C.
Protection Degree: IP65.
Certificate: INERIS 04ATEX0045.
Ambient Temperature: -20 / +60 °C (+40 °C).
Zones: 1 – 21 – 2 – 22.

Threads:

NPT (ANSI B1.20.1).

Inhibiting treatments:

Standard epoxy painting RAL 7005.

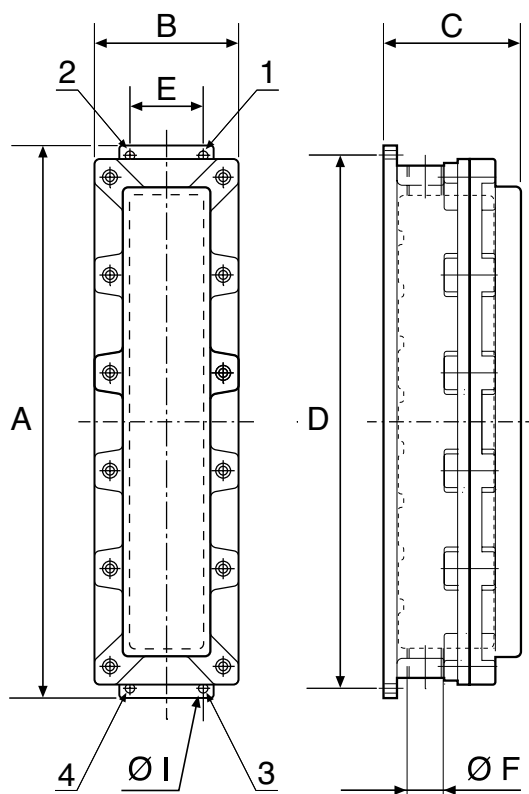
On request:

Pushbuttons, pilot lights, selector switches.
Other epoxy painting colours different from the standards.
Special inhibiting treatment.
Cable glands for armoured or non armoured cable.
Other type of threads [Metric x 1.5 (ISO 261), ISO7/1 (UNI6125)].

Grounding:

External: M5 grounding point.
Internal: M5 grounding point.

Drawing EFDC



Legend:

- A - Maximum external dimension.
- B - Maximum external dimension.
- C - Maximum external dimension.
- D - Fixing holes wheel base.
- E - Fixing holes wheel base.
- Ø F - Cable entry dimension.
- Ø I - Fixing holes diameter.
- EFDC2 → EFDC6 - Ref. 2 and 3: fixing holes.
- EFDC8, EFDC11 - Ref. 1, 3 and 4: fixing holes
Ref. 2: grounding point.

EFDC - Data Table

Dimensions [mm] and approx. Weight [kg]

Type	Dimensions			Entries Ø F [NPT]	D	Fixation		Weight
	A	B	C			E	Ø I	
EFDC 2	143	113	87	2x3/4"	125	55	2x7	1.45
EFDC 3	196	115	90	2x3/4"	172	93	2x7	1.9
EFDC 4	239	108	103	2x3/4"	227	48	2x7	2.65
EFDC 6	336	108	103	2x3/4"	340	40	2x7	3.4
EFDC 8	412	108	103	2x1"	400	44	4x7	4.3
EFDC 11	525	108	103	2x1"	510	44	4x7	11.4

- Note:
- 1) Maximum lamp voltage and power: 240 V – 5 W.
 - 2) For IIB+H₂ version, letter "-H" to be added after "EFDC" (e.g. EFDC-H).
 - 3) Pushbutton suffix identifies the max. number of 1/2" components (pushbutton and pilot light); other components (potentiometer, switches, ...) may require more than one place.
 - 4) Dimensions can slightly differ due to casting model tolerance.