

Features

- Enclosures manufactured from copper-free aluminum or AISI 316L stainless steel
- Suitable for operation in Zones 1, 2, 21 and 22
- Certified Ex d IIC and Ex tb
- More than 50 enclosure size options
- Free configuration of cable entries and terminals for customized terminal boxes
- Customizable configuration of operating elements and cable gland types as per specification
- Integration of electrical components and control elements as per customer specification
- Choice of viewing windows for monitoring instruments

Assembly



Function

The GUB series of Ex d IIC certified enclosures forms the optimal basis for the application-specific configuration of terminal boxes as well as control and distribution panels. A wide range of components and control functions can be integrated in one out of more than 50 sizes of Ex d and Ex tb certified flameproof enclosures. They are manufactured from copper-free aluminum with increased corrosion resistance or from high-quality stainless steel. This durability and the comprehensive enclosure sizes cover the requirements of many industries including offshore and marine applications. A choice of windows and enclosure extensions are available. Electrical components can be integrated as per customer specification.

Type code / model number

Type

GUB enclosure Ex d IIC

Material

- : copper-free aluminum
- : **X** stainless steel

Window

- : no window
- : **W** window

Enclosure variant

- : standard variant
- : **E** variant with extension

Enclosure size

- : **00 ... 5** see dimensions data table

further definition

- : digits for function definition, not fixed

Item number

- : Yxxxxxx

GUB					.	-Yxxxxxx
GUB		W	E	3	.	-Yxxxxxx (example: GUB size 3 in aluminum with extension and window)

Release date 2015-01-26 T164870

Refer to "General Notes Relating to Pepperl+Fuchs Product Information".

Pepperl+Fuchs Group
www.pepperl-fuchs.com

USA: +1 330 486 0002
pa-info@us.pepperl-fuchs.com

Germany: +49 621 776 2222
pa-info@de.pepperl-fuchs.com

Singapore: +65 6779 9091
pa-info@sg.pepperl-fuchs.com

Technical Data Enclosure GUB* Ex d IIC in Aluminum and Stainless Steel**Electrical specifications**

Operating voltage	660 V DC / 1000 V AC max.
Operating current	1000 A max.

Mechanical Specification

Cover fixing	threaded cover
Protection degree	IP66 / IP67 with O-Ring

Material

Enclosures	copper-free aluminum alloy or AISI 316L (1.4404) stainless steel
Finish	aluminum: epoxy coated grey RAL7005 stainless steel: surface shot-peened
Seal	none
Weight	see dimension data tables
Grounding	M6 external grounding stud, internal M5 or M6
Window	thermo-resistant tempered glass

Ambient conditions

Ambient temperature	-50 °C ... 60 °C (-58 °F ... 140°F) -20 °C ... 60 °C (-4 °F ... 140°F) GUB*5* and GUBX*5*
---------------------	--

Data for application in connection with Ex-areas

EC-Type Examination Certificate	INERIS 14ATEX0035X
Group, category, type of protection, temperature class	[Ex] II 2 GD Ex d IIC Gb Ex tb IIIC Db

International approvals

IECEx approval	IECEx INE 14.0042X
----------------	--------------------

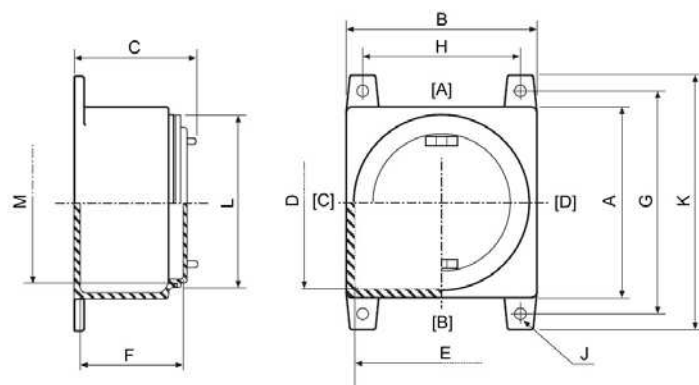
Conformity

Protection degree	EN 60529
-------------------	----------

General information

Supplementary information	EC-Type Examination Certificate, Statement of Conformity, Declaration of Conformity, Attestation of Conformity and instructions have to be observed where applicable. For information see www.pepperl-fuchs.com .
---------------------------	---

Dimensions GUB, Aluminum



Legend

- A - Maximum external dimension
- B - Maximum external dimension
- C - Maximum external dimension, depth
- D - Internal dimension
- E - Internal dimension
- F - Internal depth
- G - Fixing holes center
- H - Fixing holes center
- J - Fixing holes diameter
- K - Maximum external dimension with mounting bracket
- L - Diameter cover or window
- M - Diameter body access
- [A] ... [D] - Entry faces

For details see dimensions data tables

Dimensions Data Table GUB

Type	Dimensions (1) [mm]			Dimensions (1) internal [mm]			Cover Diam. L	Body access Diam. M	Weight approx. (2) [kg]	Max. power dissipation (3) [W]
	A	B	C	D	E	F				
GUB 00	119	119	137	92	92	98	112	97	2	35
GUB 0	150	150	150	125	125	115	136	114	3.5	60
GUB 0H	150	150	190	125	125	152	136	114	4.5	75
GUB 1	200	200	160	170	170	112	189	163	6.4	60
GUB 1H	200	200	200	170	170	152	189	163	7.6	75
GUB 1PF	176	176	139	150	150	105	170	147	6.4	50
GUB 2	250	250	160	225	225	116	231	206	8.5	80
GUB 3	250	250	205	225	225	158	231	206	10.7	150
GUB 3L	360	360	245	325	325	185	348	320	21	280
GUB 4	450	450	305	410	410	230	437	406	42	400
GUB 4A	450	450	235	410	410	160	437	406	37	310
GUB 5	550	550	360	510	510	270	536	504	60.5	600

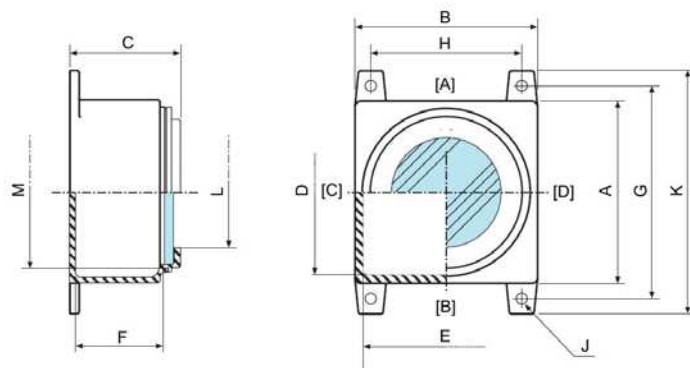
(1) Real values can slightly differ due to casting tolerances.

(2) Weight shows empty enclosures, it will increase according to installed components.

(3) Max. power dissipation at T4, enclosures without and with window.

Fixation dimensions see further down.

Dimensions GUBW, Aluminum with Window



Legend

- A - Maximum external dimension
- B - Maximum external dimension
- C - Maximum external dimension, depth
- D - Internal dimension
- E - Internal dimension
- F - Internal depth
- G - Fixing holes center
- H - Fixing holes center
- J - Fixing holes diameter
- K - Maximum external dimension with mounting bracket
- L - Diameter cover or window
- M - Diameter body access
- [A] ... [D] - Entry faces

For details see dimensions data tables

Dimensions Data Table GUBW

Type	Dimensions (1) [mm]			Dimensions (1) internal [mm]			Window	Body access	Weight approx. (2)	Max. power dissipation (3)
	A	B	C	D	E	F	Diam. L	Diam. M	[kg]	[W]
GUBW 00	119	119	125	92	92	86	63	97	2.1	35
GUBW 0	150	150	135	125	125	112	79	114	3.6	60
GUBW 0H	150	150	175	125	125	146	79	114	4.6	75
GUBW 1	200	200	140	170	170	103	121	163	6.3	60
GUBW 1H	200	200	180	170	170	143	121	163	7.5	75
GUBW 2	250	250	140	225	225	100	160	206	9	80
GUBW 3	250	250	185	225	225	143	160	206	11	150
GUBW 3L	360	360	225	325	325	162	260	320	22	280
GUBW 4	450	450	290	410	410	205	260	406	44	400
GUBW 4A	450	450	220	410	410	135	260	406	39	310
GUBW 5 - WG1	550	550	360	510	510	270	121	504	60	600
GUBW 5 - WG2	550	550	360	510	510	270	160	504	60	600

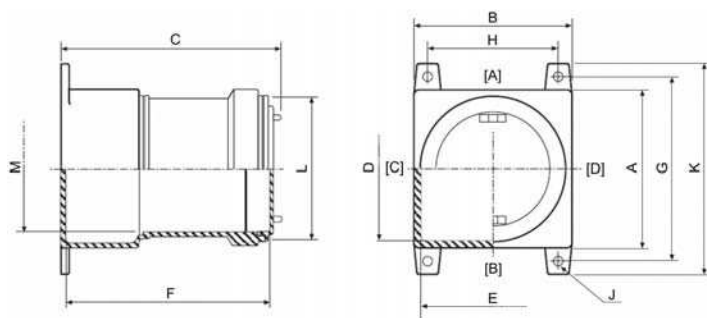
(1) Real values can slightly differ due to casting tolerances.

(2) Weight shows empty enclosures, it will increase according to installed components.

(3) Max. power dissipation at T4, enclosures without and with window.

Fixation dimensions see further down.

Dimensions GUBE, Aluminum with Extension



Legend

- A - Maximum external dimension
- B - Maximum external dimension
- C - Maximum external dimension, depth
- D - Internal dimension
- E - Internal dimension
- F - Internal depth
- G - Fixing holes center
- H - Fixing holes center
- J - Fixing holes diameter
- K - Maximum external dimension with mounting bracket
- L - Diameter cover or window
- M - Diameter body access
- [A] ... [D] - Entry faces

For details see dimensions data tables

Dimensions Data Table GUBE

Type	Dimensions (1) [mm]			Dimensions (1) internal [mm]			Cover	Body access	Weight approx. (2)	Max. power dissipation (3)
	A	B	C	D	E	F	Diam. L	Diam. M	[kg]	[W]
GUBE 0	150	150	255	125	125	215	136	102	2.3	75
GUBE 0H	150	150	295	125	125	255	136	102	4.8	75
GUBE 1	200	200	300	170	170	255	189	146	9.1	83
GUBE 1H	200	200	340	170	170	295	189	146	10.4	100
GUBE 2	250	250	340	225	225	295	231	190	13	128
GUBE 3	250	250	385	225	225	335	231	190	15.2	200
GUBE B3L	360	360	410	325	325	345	348	300	32.5	333
GUBE 3L	360	360	500	325	325	435	348	300	35	415
GUBE 4	450	450	545	410	410	470	437	386	59	533
GUBE 4A	450	450	475	410	410	395	437	386	54	465

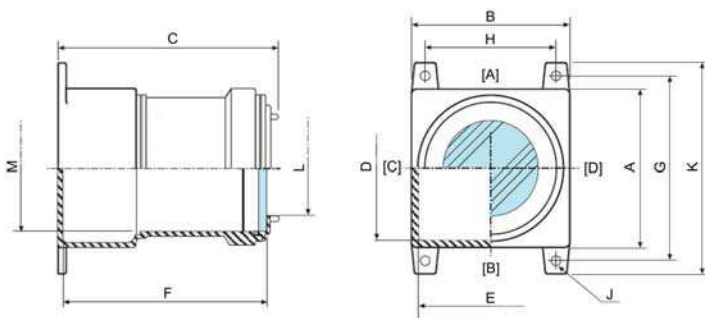
(1) Real values can slightly differ due to casting tolerances.

(2) Weight shows empty enclosures, it will increase according to installed components.

(3) Max. power dissipation at T4, enclosures without and with window.

Fixation dimensions see further down.

Dimensions GUBWE, Aluminum with Extension and Window



Legend

- A - Maximum external dimension
- B - Maximum external dimension
- C - Maximum external dimension, depth
- D - Internal dimension
- E - Internal dimension
- F - Internal depth
- G - Fixing holes center
- H - Fixing holes center
- J - Fixing holes diameter
- K - Maximum external dimension with mounting bracket
- L - Diameter cover or window
- M - Diameter body access
- [A] ... [D] - Entry faces

For details see dimensions data tables

Dimensions Data Table GUBWE

Type	Dimensions (1) [mm]			Dimensions (1) internal [mm]			Window Diam. L	Body access Diam. M	Weight approx. (2) [kg]	Max. power dissipation (3) [W]
	A	B	C	D	E	F				
GUBWE 0	150	150	240	125	125	200	79	102	3.5	75
GUBWE 0H	150	150	280	125	125	235	79	102	5	75
GUBWE 1	200	200	280	170	170	238	121	146	9	83
GUBWE 1H	200	200	320	170	170	277	121	146	10.3	100
GUBWE 2	250	250	320	225	225	277	160	190	12.5	128
GUBWE 3	250	250	365	225	225	318	160	190	15.5	200
GUBWE B3L	360	360	390	325	325	330	260	300	33.5	333
GUBWE 3L	360	360	480	325	325	420	260	300	36	415
GUBWE 4	450	450	530	410	410	440	260	386	61	533
GUBWE 4A	450	450	460	410	410	375	260	386	56	465

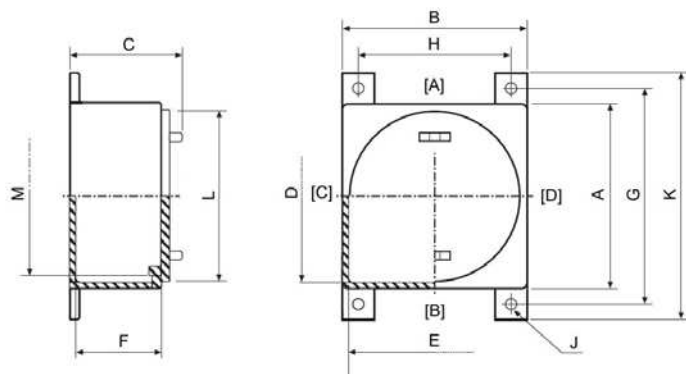
(1) Real values can slightly differ due to casting tolerances.

(2) Weight shows empty enclosures, it will increase according to installed components.

(3) Max. power dissipation at T4, enclosures without and with window.

Fixation dimensions see further down.

Dimensions GUBX, Stainless Steel



Legend

- A - Maximum external dimension
- B - Maximum external dimension
- C - Maximum external dimension, depth
- D - Internal dimension
- E - Internal dimension
- F - Internal depth
- G - Fixing holes center
- H - Fixing holes center
- J - Fixing holes diameter
- K - Maximum external dimension with mounting bracket
- L - Diameter cover or window
- M - Diameter body access
- [A] ... [D] - Entry faces

For details see dimensions data tables

Dimensions Data Table GUBX

Type	Dimensions (1) [mm]			Dimensions (1) internal [mm]			Cover Diam. L	Body access Diam. M	Weight approx. (2) [kg]	Max. power dissipation (3) [W]
	A	B	C	D	E	F				
GUBX 00	118	118	134	92	92	98	112	94	7	35
GUBX 0	150	150	150	125	125	115	136	114	12	60
GUBX 0H	150	150	190	125	125	152	136	114	16	75
GUBX 1	200	200	160	173	173	112	189	159	23	60
GUBX 1H	200	200	200	173	173	152	189	159	27	75
GUBX 1PF	176	176	139	150	150	105	170	147	23	50
GUBX 2	252	252	185	225	225	116	235	200	30	80
GUBX 3	258	258	227	225	225	158	235	200	37	150
GUBX 3L	360	360	245	325	325	185	348	320	91	280
GUBX 4	450	450	319	410	410	260	437	400	150	400
GUBX 4A	450	450	249	410	410	160	437	400	125	310
GUBX 5	550	550	380	510	510	288	540	508	n.a.	600

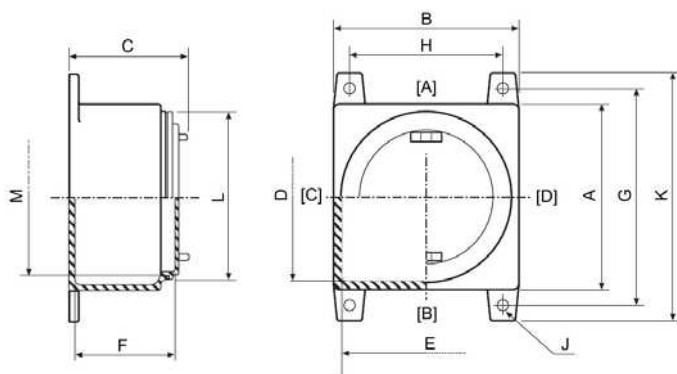
(1) Real values can slightly differ due to manufacturing tolerances.

(2) Weight shows empty enclosures, it will increase according to installed components.

(3) Max. power dissipation at T4.

Fixation dimensions see further down.

Dimensions GUB*, Fixation and Cable Entries



Legend

- G - Fixing holes center
- H - Fixing holes center
- J - Fixing holes diameter
- K - Maximum external dimension with mounting bracket
- [A] ... [D] - Entry faces

For details see dimensions data tables

Dimensions Data Table GUB* - Fixation

Type	Max. external dimension [mm]	Fixation [mm]			Brackets qty.
		K	G	H	
GUB* 00	170	145	95	8	2
GUB* 0	205	178	125	8	2
GUB* 0H	205	178	125	8	2
GUB* 1	255	228	178	10	2
GUB* 1H	255	228	178	10	2
GUB* 1PF	220	196	154	10	2
GUB* 2	305	275	232	10	4
GUB* 3	310	285	228	10	4
GUB* 3L	430	395	318	10	4
GUB* 4	530	485	410	10	4
GUB* 4A	530	485	410	10	4
GUB* 5	640	595	513	10	4

Cable entries - maximum quantity per size

Type	Cover	Entry faces [A] ... [D]								
		M12 1/4"	M20 1/2"	M25 3/4"	M32 1"	M42 1.1/4"	M50 1.1/2"	M63 2"	M75 2.1/2"	M85 3"
GUB* 00	1	4	3	2	1	1	1	-	-	-
GUB* 0	1	6	5	3	2	2	1	1	-	-
GUB* 0H	1	8	8	5	3	3	1	1	1	-
GUB* 1	2	8	8	5	4	3	2	1	1	-
GUB* 1H	2	8	8	5	4	4	2	1	1	-
GUB* 1PF	1	8	8	5	3	3	1	1	1	-
GUB* 2	3	10	10	5	4	3	3	2	-	-
GUB* 3	3	15	15	8	6	6	3	2	2	-
GUB* 3L	8	18	17	11	8	8	5	3	2	1
GUB* 4	10	21	21	18	14	14	8	5	4	1
GUB* 4A	10	20	17	12	10	10	4	3	3	-
GUB* 5	10	32	30	26	17	14	8	5	4	1

Metric ISO pitch 1.5 mm, NPT ANSI ASME B1.20.1

For types of cable glands and combination of different gland sizes please contact Pepperl+Fuchs.

Cable entries - maximum quantity per size

Type	Bottom				
	M20 1/2"	M25 3/4"	M32 1"	M42 1.1/4"	M50 1.1/2"
GUB* 00	1	1	1	-	-
GUB* 0	2	2	1	-	-
GUB* 0H	2	2	1	-	-
GUB* 1	2	2	2	-	-
GUB* 1H	2	2	2	-	-
GUB* 1PF	2	2	1	-	-
GUB* 2	10	2	2	-	-
GUB* 3	10	3	2	-	-
GUB* 3L	3	3	2	-	-
GUB* 4	3	3	3	3	3
GUB* 4A	3	3	3	3	3
GUB* 5	6	6	4	3	3

Metric ISO pitch 1.5 mm, NPT ANSI ASME B1.20.1

For types of cable glands and combination of different gland sizes please contact Pepperl+Fuchs.

Solution Examples



Release date 2015-01-26 T164870

Refer to "General Notes Relating to Pepperl+Fuchs Product Information".

Pepperl+Fuchs Group
www.pepperl-fuchs.com

USA: +1 330 486 0002
pa-info@us.pepperl-fuchs.com

Germany: +49 621 776 2222
pa-info@de.pepperl-fuchs.com

Singapore: +65 6779 9091
pa-info@sg.pepperl-fuchs.com