



**DB3**

## **Audible alarm device**

For explosion-hazard areas of zones 1 and 2

AlgoRex  
Synova™  
Sinteso™  
Cerberus® PRO



- 
- **For fire detection and extinguishing systems**
  - **Various programmable types of tone**
  - **For indoor and outdoor applications**
  - **Explosion protection category Ex d**
  - **Flameproof alarm device – the use of a shunt Zener diode barrier is not necessary**

**Characteristics**

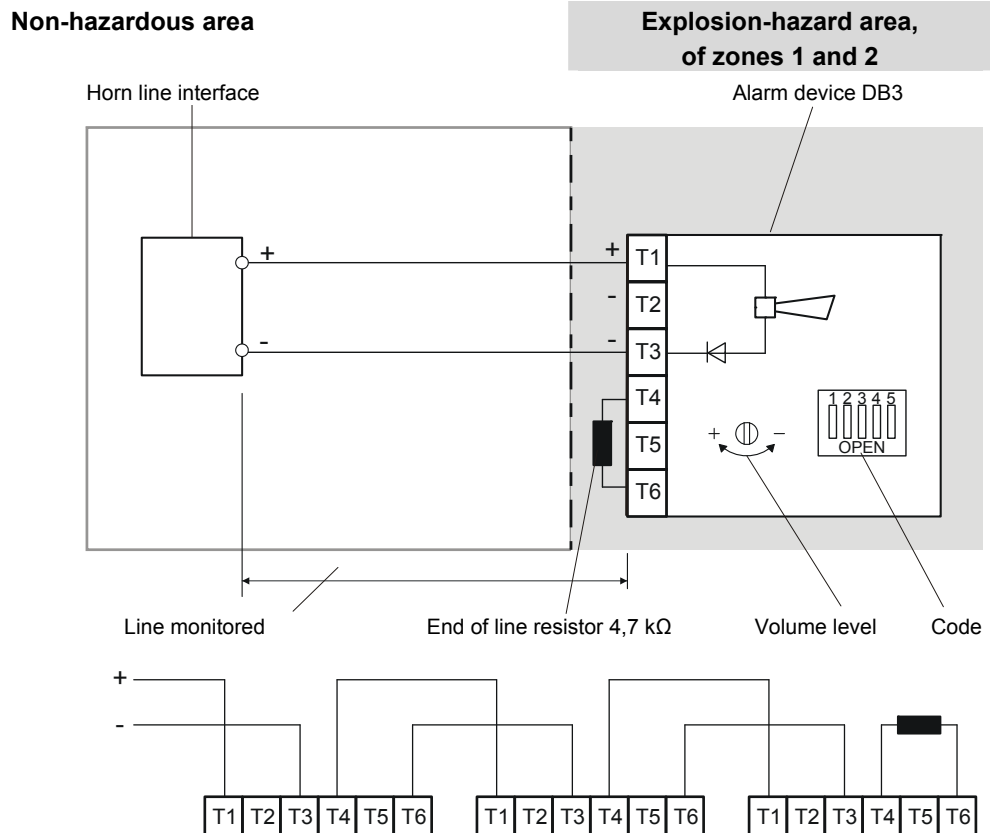
- The flame paths, flare and the body, are manufactured completely from UV stable glass reinforced polyester. Stainless steel screws and sinter are incorporated thus ensuring a corrosion free product.
- The DB3 audible alarm device is designed to the explosion protection category 'flameproof enclosure' Ex d: Those parts which could ignite an explosive atmosphere are contained in an enclosure which must be capable of withstanding the pressure of an internal explosion. The enclosure must also prevent this internal explosion from igniting an explosive atmosphere external to the enclosure.
- Only use the delivered cable gland, approved for explosion-hazard areas! If shielded cables are used, order the special type of cable gland (refer to details for ordering).

**Application**

The DB3 flameproof audible alarm device intended for use in potentially explosive atmospheres has been designed with high ingress protection to cope with the harsh environmental conditions found offshore and onshore in the oil, gas and petrochemical industries.


**Connection**

- Equipment installed in explosion-hazard areas must always comply with local national regulations.
- The use of a shunt Zener diode barrier between explosion-hazard and non-hazardous areas is not necessary.

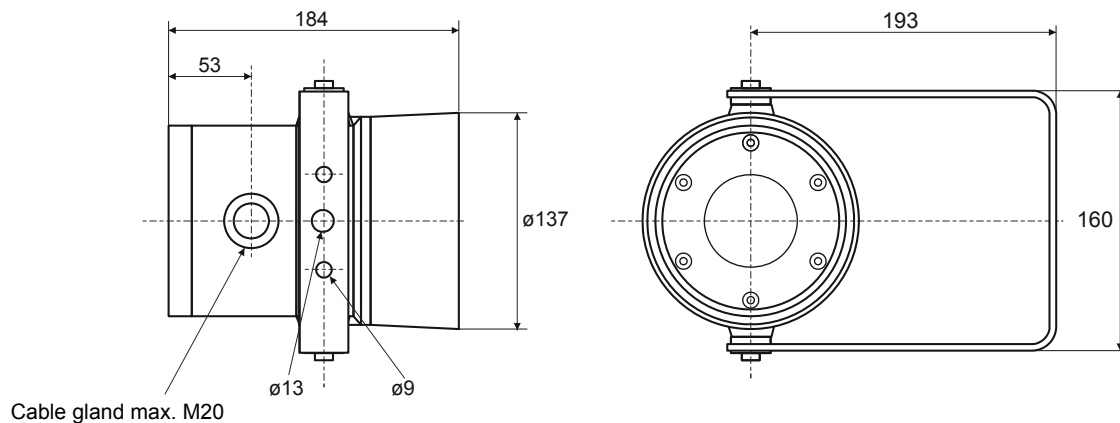


Further details can be found in the document  
 - 'Fire protection in explosion-hazard areas', no. 1204

## Programming

No.	Sound	Code	Description	Typical vol- ume level	Typical cur- rent con- sumption
				dB (A) 1 m	mA
				at 24 VDC	at 24 VDC
					
		1 2 3 4 5			
1	Alternating 800 Hz/970 Hz at ¼ s	1 1 1 1 1	BS5839 Part 1 1988	114	300
2	Sweeping 800 Hz/970 Hz at 7 Hz	1 1 1 1 0	Fast sweep (LF) BS5839 Part 1 1988	114	300
3	Sweeping 800 Hz/970 Hz at 1 Hz	1 1 1 0 1	Medium sweep (LF) BS5839 Part 1 1988	114	300
4	Continuous at 2850 Hz	1 1 1 0 0		109	150
5	Sweeping 2400 Hz – 2850 Hz at 7 Hz	1 1 0 1 1	Fast sweep	114	300
6	Sweeping 2400 Hz – 2850 Hz at 1 Hz	1 1 0 1 0		114	300
7	Slow whoop	1 1 0 0 1	Slow whoop	115	350
8	Sweeping 1200 Hz – 500 Hz at 1 Hz	1 1 0 0 0	Din Tone	115	350
9	Alternating 2400 Hz / 2850 Hz at 2 Hz	1 0 1 1 1		111	200
10	Intermittent 970 Hz at 1Hz	1 0 1 1 0	Back-up alarm (LF) Part 1 1988	114	300
11	Alternating 800 Hz / 970 Hz at 7/8 Hz	1 0 1 0 1		114	300
12	Intermittent 2850 Hz at 1 Hz	1 0 1 0 0	Back-up alarm (HF)	109	150
13	Intermittent 970 Hz, ¼ s On/1 s Off	1 0 0 1 1		114	300
14	Continuous at 970 Hz	1 0 0 1 0		114	300
15	554 Hz for 100 ms, 440 Hz for 400 ms	1 0 0 0 1	French fire sound	101	100
16	Intermittent 660 Hz, 150 ms On/150 ms Off	1 0 0 0 0	Swedish alarm tone	106	100
17	Intermittent 660 Hz, 1.8 s On/1.8 s Off	0 1 1 1 1	Swedish alarm tone	106	100
18	Intermittent 660 Hz, 6.5 s On/13 s Off	0 1 1 1 0	Swedish alarm tone	104	100
19	Continuous 660 Hz	0 1 1 0 1	Swedish alarm tone	106	100
20	Alternating 554 Hz / 440 Hz at 1 Hz	0 1 1 0 0	Swedish alarm tone	100	100
21	Intermittent 660 Hz at 7/8 Hz	0 1 0 1 1	Swedish alarm tone	106	100
22	Intermittent 2850 Hz, 150 ms On/100 ms Off	0 1 0 1 0	Pelican crossing	109	150
23	Sweeping 800 Hz – 970 Hz at 50 Hz	0 1 0 0 1	Low frequency buzz BS5839 Part 1 1988	113	300
24	Sweeping 2400 Hz – 2850 Hz at 50 Hz	0 1 0 0 0	High frequency buzz	112	250
25	3 970 Hz pulses, 0.5 s On/0.5 s Off	0 0 1 1 1		113	300
26	3 2850 Hz pulses, 0.5 s On/0.5 s Off, 1.5 s Off	0 0 1 1 0		109	150
27	Intermittent 3100 Hz, 320 ms On/680 ms Off	0 0 1 0 1		110	200

## Dimensions



## Technical data

Manufacturer's designation	DB3
Operating voltage	12... 48 VDC
Sound level at 24 V and 1 m	101... 115 dB(A) depends on sound
Current consumption	refer to sound output
Tones	27
Cross-sectional area of connection wires	6 x 2.5 mm <sup>2</sup>
Operating temperature	-20... +55 °C
Humidity (class DIN 40040)	≤100% rel.
Protection category IEC 60529	IP66/67
Protection against reversed polarity	yes
Design	
- Horn	anti-static, UV stable, glass reinforced polyester, red
- Swivel bracket and screws	stainless steel
Standards	CENELEC, EN 50014, 18
Ex classification	II 2 G Ex d IIC T5 (-20 °C ≤Ta ≤55 °C)
Approvals	
- BASEEFA	No. BAS 00ATEX2097X

## Details for ordering

Type	Part no	Designation	Weight
DB3	BPZ:5757970001	Audible alarm device (cable gland Hawke A501/421 included)	4.300 kg
-	-	Cable gland for shielded cable Hawke ICG 653/UNIV	-

Ordering address:  
MEDC Ltd, Colliery Road, Pinxton,  
Nottingham NG16 6JF, UK  
Sales Enq., Fax: +44 (0)1773 582 830  
Sales Orders, Fax: +44 (0)1773 582 832