



EN Operating instructions. . . . . page 1  
Translation of the original operating instructions

**Destination and use**

The actuators are preferably used on safety guards in conjunction with the AZ 15 or AZ 16 safety switches.

Different actuator models are available: For sliding and removable safety guards, preferably use the AZ 15/16-B1 actuator. For hinged guards, the AZ 15/16-B2, -B3 and -B6 actuator.

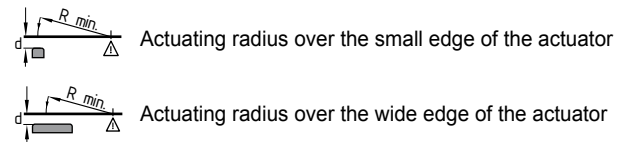
**Mounting instructions**

When the switch is fitted on a hinged safety guard, please ensure that the point of rotation is located within the range of the upper surface of the safety switch, in which the actuator hook is inserted (refer to table).

**i** Use tamper-proof screws to prevent unauthorised removal of the switch; these screws are available as an accessory. Please observe that, when fixing the switch e.g. by means of rivetting or welding, the insertion depth of the actuator is not modified.

Actuating radii				
	R <sub>min</sub> [mm]	d [mm]	R <sub>min</sub> [mm]	d [mm]
AZ 15/16-B2			45	11
AZ 15/16-B2-1747			45	11
AZ 15/16-B3	32	11		
AZ 15/16-B3-1747	32	11		
AZ 15/16-B6	25	11	38	11
AZ 15/16-B1				
AZ 15/16-B1-1747				
AZ 15/16-B1-2024				
AZ 15/16-B1-2053				
AZ 15/16-B1-2177				
AZ 15/16-B1-2245				

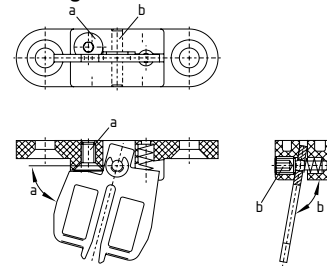
**Key**



The axis of the hinge must be d mm above and in a parallel plane to the top surface of the safety switch. The basis setting provides a minimum radius of R<sub>min</sub>.

**i** **Setting screw**  
For larger radius, the angle has to be adjusted correspondingly by turning the set screws a (AZ 15/16-B2), b (AZ 15/16-B3) and a+b (AZ 15/16-B6), using an hexagonal key wrench 2.5 mm A/F. The basis setting provides a minimum radius.

**Setting screw**



**i** **AZ 15/16-B1-2245 with rubber mountings**  
Max. 200 Ncm tightening torque for mounting the actuator.

**K. A. Schmersal GmbH & Co. KG**  
Industrielle Sicherheitssysteme  
Mödinghofe 30, D - 42279 Wuppertal  
Postfach 24 02 63, D - 42232 Wuppertal

Phone: +49 - (0)2 02 - 64 74 - 0  
Telefax +49 - (0)2 02 - 64 74 - 1 00  
E-Mail: info@schmersal.com  
Internet: http://www.schmersal.com