



EN Operating instructions.pages 1 to 2
Translation of the original operating instructions

Destination and use

The retrofit kit is used for subsequent functional expansion of the solenoid interlock AZM 200.



The mounting and safety instructions as well as the instructions for the functional test and the maintenance contained in the standard operating manual of the AZM 200 must be observed as well.

Emergency release: RF-AZM200-N

Equips the solenoid interlock AZM200 with an additional emergency release. This is only for use outside the hazardous zone. To activate the emergency release turn the red lever in the direction of the arrow to the end stop. In this position the guard system can be opened and the safety exits switch off. The lever is latched and cannot be turned back. To cancel the locked condition, the locking pin on the lever should be raised and at the same time the lever should be rotated back to the end stop.

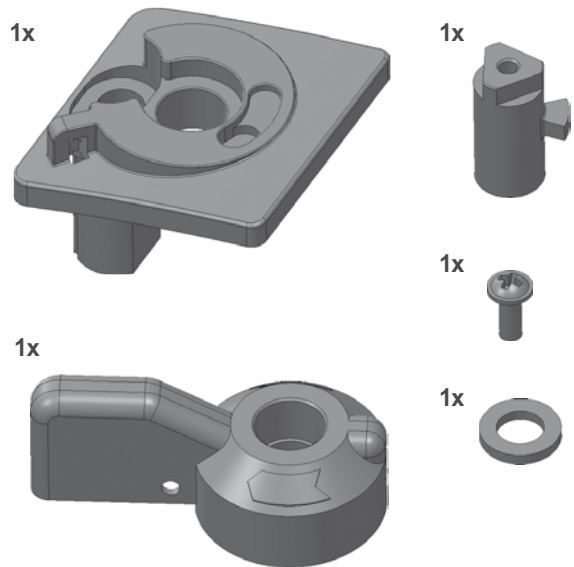
Emergency exit: RF-AZM200-T

Equips the solenoid interlock AZM200 with an additional emergency exit. This is only for use inside the hazardous zone. To activate the emergency exit, turn the red lever in the direction of the arrow to the end stop. In this position the guard system can be opened and the safety exits switch off. The blocked position is canceled by turning the lever in the opposite direction. In the unlocked position, the guard system is secured against unintentional locking.

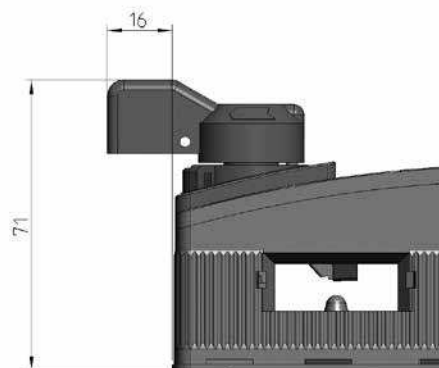
Comprehensive quality insurance to 2006/42/EC

Schmersal is a certified company to appendix X of the Machinery Directive. Authorised by this, Schmersal takes on the responsibility to implement the conformity assessment of the variants and combinations of the products listed in Annex IV.

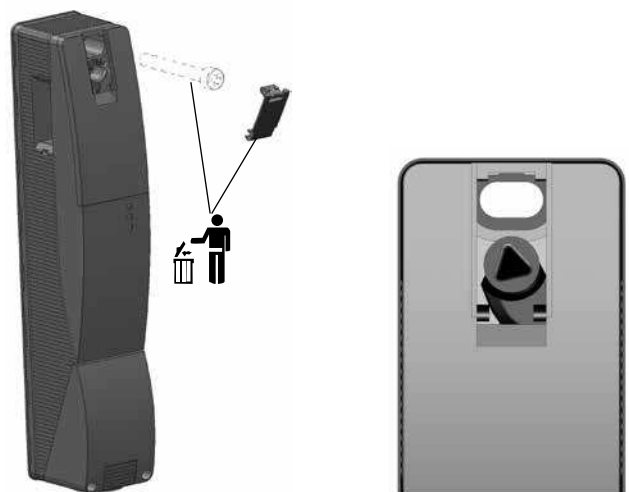
Included in delivery



Dimensions in mm

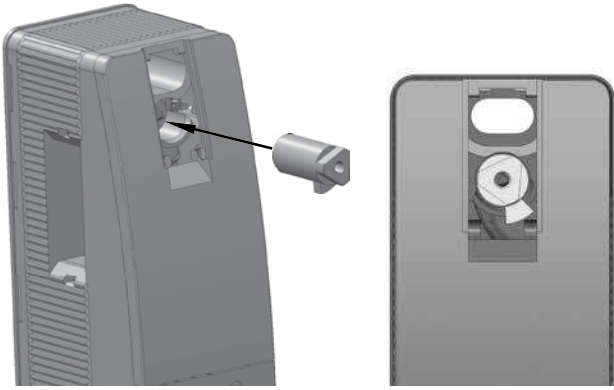


Step 1



Alignment, triangle up!

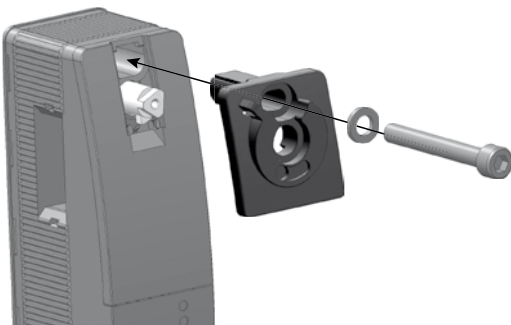
Step 2



Alignment, triangle as indicated!

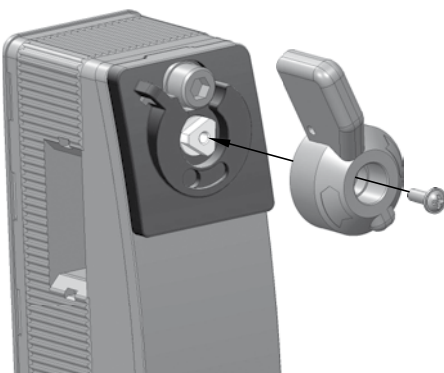
Step 3

A suitable M6 screw as well as the supplied washer must be used to fix the retrofit kit.



Maximum tightening torque for solenoid interlock: 8 Nm.

Step 4

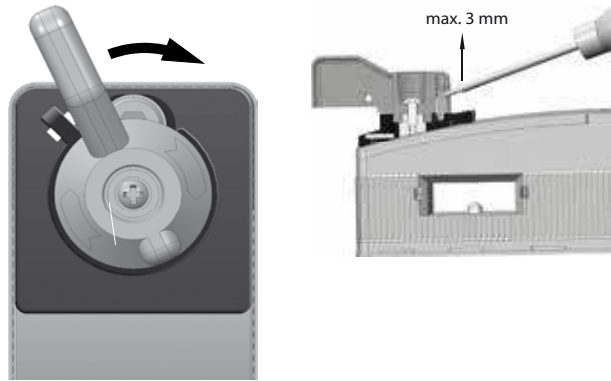


Maximum tightening torque: 0.7 Nm.

Work step 5a - Functional test of the emergency release

The proper functioning of the emergency release must be tested prior to the start-up of the entire plant, with the entire system consisting of the AZM 200 and the actuator in fitted and locked condition.

To activate the emergency release turn the red lever in the direction of the arrow to the end stop. In this position the guard system can be opened and the safety exits switch off. The lever is latched and cannot be turned back. To cancel the locked condition, the locking pin on the lever should be raised 3 mm at the most (max. blade width 2.5 mm). At the same time the lever should be rotated back to the end stop.



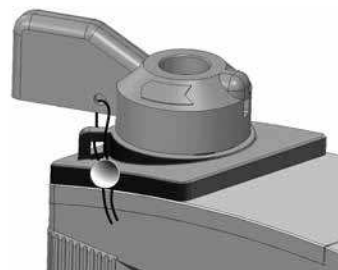
Work step 5b - functional check of the emergency exit

The proper functioning of the emergency exit must be tested prior to the start-up of the entire plant, with the entire system consisting of the AZM 200 and the actuator in fitted and locked condition.

To activate the emergency exit, turn the red lever in the direction of the arrow to the end stop. In this position the guard system can be opened and the safety exits switch off. The blocked position is canceled by turning the lever in the opposite direction. In the unlocked position, the guard system is secured against unintentional locking.



Work step 6 - Optional lead sealing



K. A. Schmersal GmbH & Co. KG

Mödinghofe 30,
D - 42279 Wuppertal
Postfach 24 02 63,
D - 42232 Wuppertal

Phone: +49 - (0)2 02 - 64 74 - 0
Telefax: +49 - (0)2 02 - 64 74 - 1 00
E-Mail: info@schmersal.com
Internet: http://www.schmersal.com