

# XSZB130

accessory for sensor - Ø30mm - fixing clamp  
with indexing - plastic



## Main

|                                       |                                 |
|---------------------------------------|---------------------------------|
| Range of product                      | OsiSense XS                     |
| Accessory / separate part category    | Mounting and fixing accessories |
| Accessory / separate part type        | Fixing clamp                    |
| Accessory / separate part designation | Fixing clamp                    |
| Accessory / separate part destination | Cylindrical M30 sensor          |
| Material                              | Plastic                         |

## Complementary

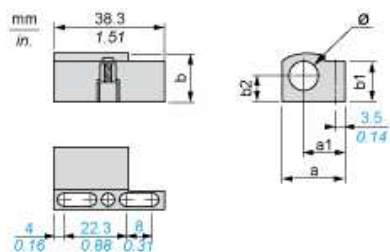
|                       |  |
|-----------------------|--|
| Product compatibility | XS cylindrical M30<br>XT cylindrical M30 |
| Product weight        | 0.02 kg                                  |

## Offer Sustainability

|                                  |   |
|----------------------------------|---|
| Sustainable offer status         | Green Premium product   |
| RoHS (date code: YYWW)           | Compliant - since 0842 - <a href="#">Schneider Electric declaration of conformity</a> |
| REACH                            | Reference not containing SVHC above the threshold                                     |
| Product environmental profile    | Available <a href="#">Download Product Environmental</a>                              |
| Product end of life instructions | Available <a href="#">Download End Of Life Manual</a>                                 |

The information provided in this documentation contains general descriptions and/or technical characteristics of the performance of the products contained herein. This documentation is not intended as a substitute for and is not to be used for determining suitability or reliability of these products for specific user applications. It is the duty of any such user or integrator to perform the appropriate and complete risk analysis, evaluation and testing of the products with respect to the relevant specific application or use thereof. Neither Schneider Electric Industries SAS nor any of its affiliates or subsidiaries shall be responsible or liable for misuse of the information contained herein.

Dimensions



Dimensions in mm

| a  | a1   | b    | b1 | b2   | ∅  |
|----|------|------|----|------|----|
| 39 | 21.7 | 35.5 | 31 | 18.5 | 30 |

Dimensions in in.

| a    | a1   | b    | b1   | b2   | ∅    |
|------|------|------|------|------|------|
| 1.53 | 0.85 | 1.40 | 1.22 | 0.73 | 1.18 |