



Contrast sensors
KT8, KT8L Laser

KT8L-P3656



Model Name > [KT8L-P3656](#)
Part No. > [1041262](#)



At a glance

- Wide range of operating distances between 30 mm and 800 mm
- Small and precise laser light spot (Class II)
- Fast switching frequency of 17 kHz
- Analog output
- Simple teach-in
- Detection reliability displayed in the bar graph display

Your benefits

- Wide range of applications with sensing distances up to 800 mm
- Precise detection of the smallest marks and objects, e.g., 1 x 1 mm²
- Adjusts itself to specific applications, opening up a wide range of uses
- Reliable operation, even with unsteady objects



Features

Sensing distance ¹⁾ :	150 mm
Light source ²⁾ :	Laser
Wave length:	655 nm
Light emission:	Long side of housing
Light spot size:	Ø 0.3 mm ³⁾
Light spot direction:	Round
Operating distance:	30 mm ... 800 mm ⁴⁾
Function:	Automatic drift correction
Type of light:	Visible red light
Dimensions (W x H x D):	30.4 mm x 53 mm x 80 mm
Housing design (light emission):	Rectangular
Teach-in mode:	Static 2-point teach-in, Dynamic teach-in (min/max)

¹⁾ From front edge of lens ²⁾ Average service life 50,000 h at T_A = +25 °C ³⁾ At focal point = sensing distance 150 mm ⁴⁾ With respect to black-white contrast 6 %/90 %

Mechanics/electronics

Ripple ¹⁾ :	≤ 5 Vpp
Power consumption ²⁾ :	< 80 mA
Switching frequency ³⁾ :	17 kHz
Response time ⁴⁾ :	30 µs
Jitter:	< 15 µs

Output type:	PNP: HIGH = VS- ≤ 2 V / LOW approx. 0 V
Switching mode:	PNP
Analog output QA:	0.3 mA ... 20 mA
Input, teach-in (ET):	PNP:, Run: U < 2 V, Teach: U = 10 V ... < U _V
Retention time (ET):	25 ms, non-volatile memory
Time delay:	20 ms, adjustable
Connection type:	Connector M12, 5-pin
Protection class ⁵⁾ :	II
Circuit protection:	Output Q short-circuit protected, Interference suppression, VS connections reverse-polarity protected
Enclosure rating:	IP 67
Weight:	400 g
Housing material:	Metal, Zinc diecast
Output current I _{max.} :	100 mA
Supply voltage:	10 V DC ... 30 V DC ⁶⁾
Fieldbus interface:	-

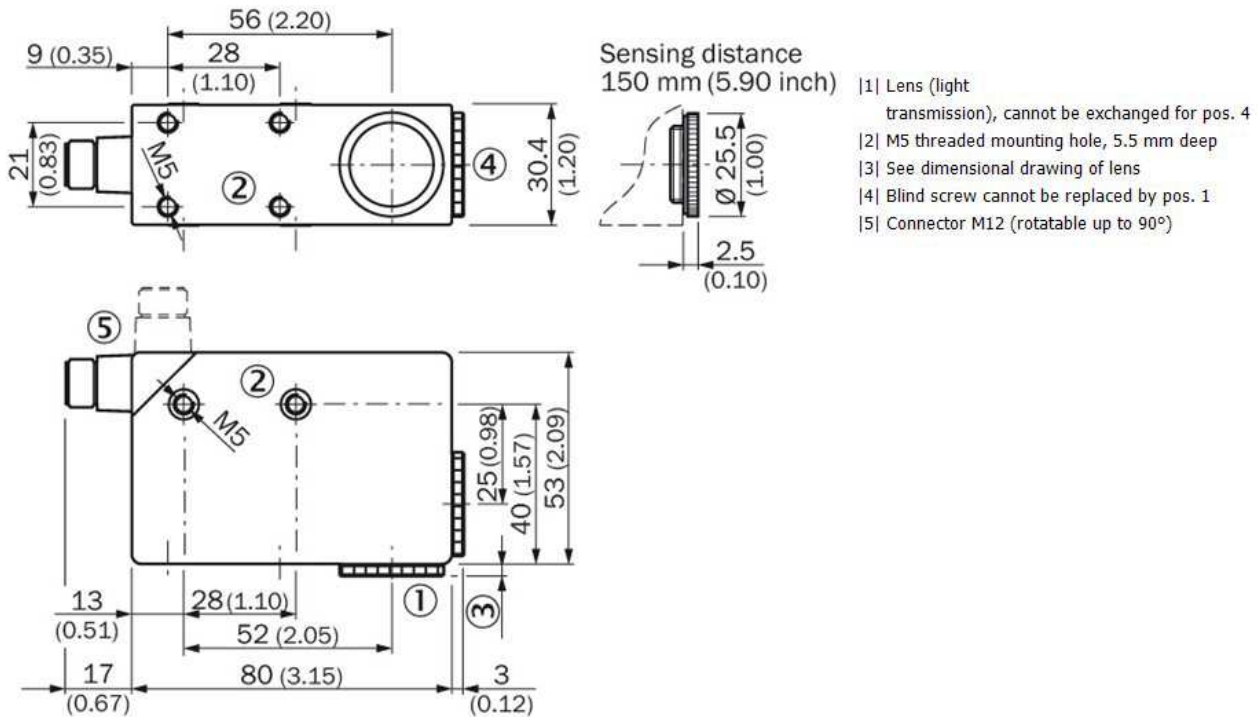
¹⁾ May not exceed or fall short of V_S tolerances ²⁾ Without load ³⁾ With light/dark ratio 1:1 ⁴⁾ Signal transit time with resistive load ⁵⁾ Reference voltage DC 50 V ⁶⁾

Limit values; operation in short-circuit protected network max. 8 A

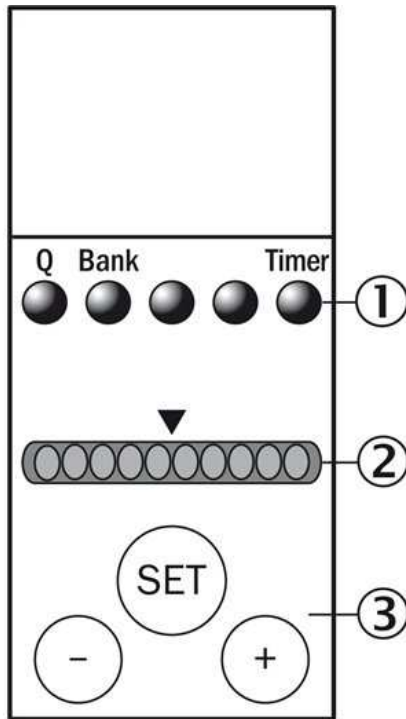
Ambient data

Shock load:	According to IEC 60068
UL File No.:	242368, CDRH-conform
Ambient operating temperature:	-10 °C ... +45 °C
Ambient storage temperature:	-10 °C ... +75 °C

Dimensional drawing



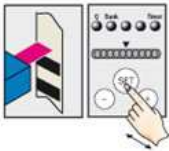
Adjustments



- [1] Function signal indicators (yellow)
- [2] Bar graph (green)
- [3] Teach-in button/"+" and "-" button

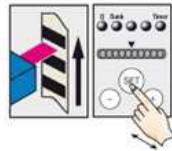
Connection type and diagram

1. Position background

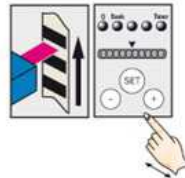


Press and hold SET button.
Emitted light turns white.

2. Move at least one repeat length using the light spot



Hold down SET button.



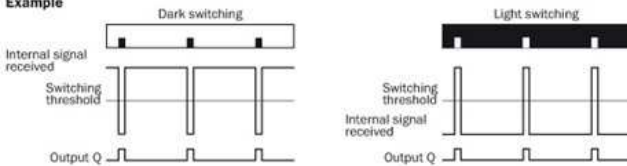
Release SET button.

Note

The bar display visualizes the detection reliability during teach-in. The more LEDs that illuminate, the better the teach-in:

- 1 LED illuminates = operation not reliable – contrast difference too low
- ≤ 4 LEDs illuminate = operation OK – sufficient contrast difference
- > 4 LEDs illuminate = reliable operation – high contrast difference

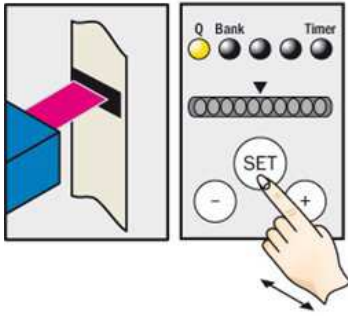
Example



Switching characteristics

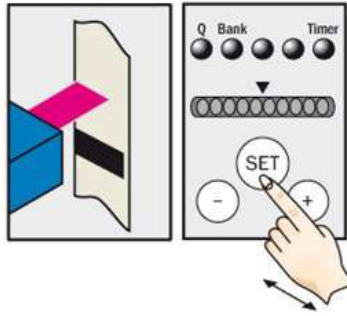
Light/dark setting is defined using teach-in sequence or menu, cf. operating instructions.
The switching threshold is set in the center between the background and the mark.
Teach-in and the light/dark setting can also be configured using an external control signal.

1. Position mark



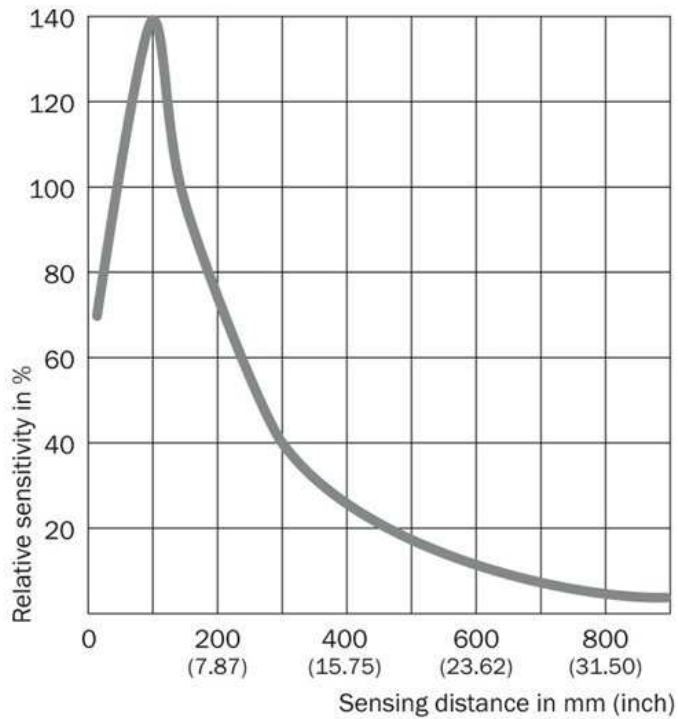
Press and hold SET button > 1 s.
Yellow LED flashes.

2. Position background



Press and hold SET button > 1 s.
Yellow LED goes out.

Sensing distance



Australia

Phone +61 3 9457 0600
1800 33 48 02 – tollfree
E-Mail sales@sick.com.au

Belgium/Luxembourg

Phone +32 (0)2 466 55 66
E-Mail info@sick.be

Brasil

Phone +55 11 3215-4900
E-Mail marketing@sick.com.br

Canada

Phone +1 905 771 14 44
E-Mail information@sick.com

Česká republika

Phone +420 2 57 91 18 50
E-Mail sick@sick.cz

China

Phone +86 4000 121 000
E-Mail info.china@sick.net.cn
Phone +852-2153 6300
E-Mail ghk@sick.com.hk

Danmark

Phone +45 45 82 64 00
E-Mail sick@sick.dk

Deutschland

Phone +49 211 5301-301
E-Mail info@sick.de

España

Phone +34 93 480 31 00
E-Mail info@sick.es

France

Phone +33 1 64 62 35 00
E-Mail info@sick.fr

Great Britain

Phone +44 (0)1727 831121
E-Mail info@sick.co.uk

India

Phone +91-22-4033 8333
E-Mail info@sick-india.com

Israel

Phone +972-4-6881000
E-Mail info@sick-sensors.com

Italia

Phone +39 02 27 43 41
E-Mail info@sick.it

Japan

Phone +81 (0)3 5309 2112
E-Mail support@sick.jp

Magyarország

Phone +36 1 371 2680
E-Mail office@sick.hu

Nederland

Phone +31 (0)30 229 25 44
E-Mail info@sick.nl

Norge

Phone +47 67 81 50 00
E-Mail sick@sick.no

Österreich

Phone +43 (0)22 36 62 28 8-0
E-Mail office@sick.at

Polska

Phone +48 22 837 40 50
E-Mail info@sick.pl

România

Phone +40 356 171 120
E-Mail office@sick.ro

Russia

Phone +7-495-775-05-30
E-Mail info@sick.ru

Schweiz

Phone +41 41 619 29 39
E-Mail contact@sick.ch

Singapore

Phone +65 6744 3732
E-Mail sales.gsg@sick.com

Slovenija

Phone +386 (0)1-47 69 990
E-Mail office@sick.si

South Africa

Phone +27 11 472 3733
E-Mail info@sickautomation.co.za

South Korea

Phone +82 2 786 6321/4
E-Mail info@sickkorea.net

Suomi

Phone +358-9-25 15 800
E-Mail sick@sick.fi

Sverige

Phone +46 10 110 10 00
E-Mail info@sick.se

Taiwan

Phone +886 2 2375-6288
E-Mail sales@sick.com.tw

Türkiye

Phone +90 (216) 528 50 00
E-Mail info@sick.com.tr

United Arab Emirates

Phone +971 (0) 4 88 65 878
E-Mail info@sick.ae

USA/México

Phone +1(952) 941-6780
1 (800) 325-7425 – tollfree
E-Mail info@sickusa.com

More representatives and agencies
at www.sick.com