



Luminescence sensors LUT9

LUT9U-11336



Model Name > [LUT9U-11336](#)
Part No. > [1047054](#)



At a glance

- Simple teach-in
- Operating range up to 250 mm
- Version with IO-Link for remote monitoring
- Bar graph display provides information about the luminescence intensity
- High speed (6.5 kHz), standard (2.5 kHz), high resolution (500 Hz) models
- Additional optical filters suppress background luminescence
- Fiber-optic cable connection (with 20 mm lens)
- Switching and analog output

Your benefits

- Simple sensitivity adjustment via teach-in for optimum adaptation to the application
- Long sensing distance tolerance leads to less mechanical height adjustments of the sensor on the machine
- Using IO-Link, the sensor can be configured and monitored by the central control system, enabling simple, cost-effective diagnostics and data collection
- Bar graph display provides continual process control through easy visualization of the luminescence intensity
- Filters ensure that background luminescence is reliably suppressed, ensuring greater process reliability
- Interchangeable lenses for different sensing distances and the second light exit provide flexibility
- High detection reliability ensures the process and reduces downtime
- Select speed or high resolution, making it ideal for any application.



Features

Sensing distance ¹⁾ :	50 mm
Operating range:	20 mm 70 mm
Light source ²⁾ :	LED
Type of light:	Ultraviolet light
Wave length:	375 nm
Light emission:	Long side
Light spot size:	5 mm x 15 mm
Light spot direction:	Vertical
Receiving filters:	RG 665
Receiving range:	670 nm ... 750 nm
Adjustment:	Static 2-point teach-in with manual fine adjustment

Output function ³⁾: Light switching
 Dimensions (W x H x D): 30.4 mm x 53 mm x 80 mm
 Housing design (light emission): Rectangular

¹⁾ From front edge of lens ²⁾ Average service life of 100,000 h at $T_A = +25\text{ °C}$ ³⁾ L/D switching via teach-in or IO-Link

Mechanics/electronics

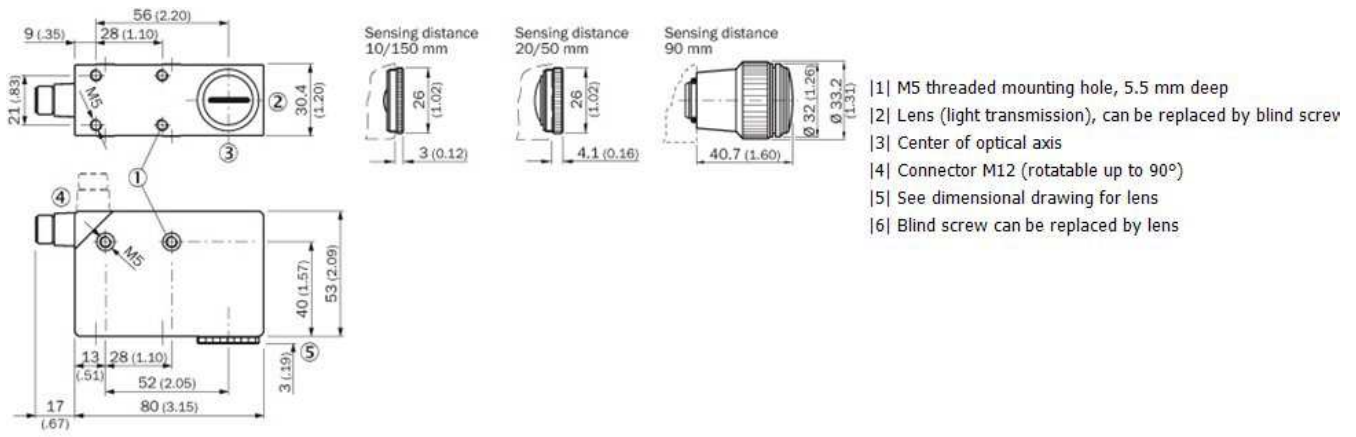
Ripple ¹⁾: < 5 Vpp
 Power consumption ²⁾: < 100 mA
 Switching frequency ³⁾: 0.5 kHz, 2.5 kHz, 6.5 kHz, Adjustable
 Response time ⁴⁾: 1 ms
 200 μ s
 75 μ s
 Output type: NPN: HIGH = approx. VS / LOW \leq 2 V
 PNP: HIGH = VS- \leq 2 V / LOW approx. 0 V
 Switching mode: PNP/NPN
 Analog output QA: 0 mA ... 13 mA
 Output current I_{max.}: 100 mA
 Time delay: 0 ms / 10 ms / 20 ms, Adjustable
 Connection type: Connector M12, 5-pin
 Protection class ⁵⁾: II
 Circuit protection: Output Q short-circuit protected
 Interference suppression
 VS connections reverse-polarity protected
 Enclosure rating: IP 67
 Weight: 400 g
 Housing material: Metal, Zinc diecast
 Supply voltage: 10 V DC ... 30 V DC ⁶⁾
 Fieldbus interface: -

¹⁾ May not exceed or fall short of V_S tolerances ²⁾ Without load ³⁾ With light/dark ratio 1:1, no time delay ⁴⁾ Signal transit time with resistive load ⁵⁾ Reference voltage
 DC 50 V ⁶⁾ Limit values; operation in short-circuit protected network max. 8 A

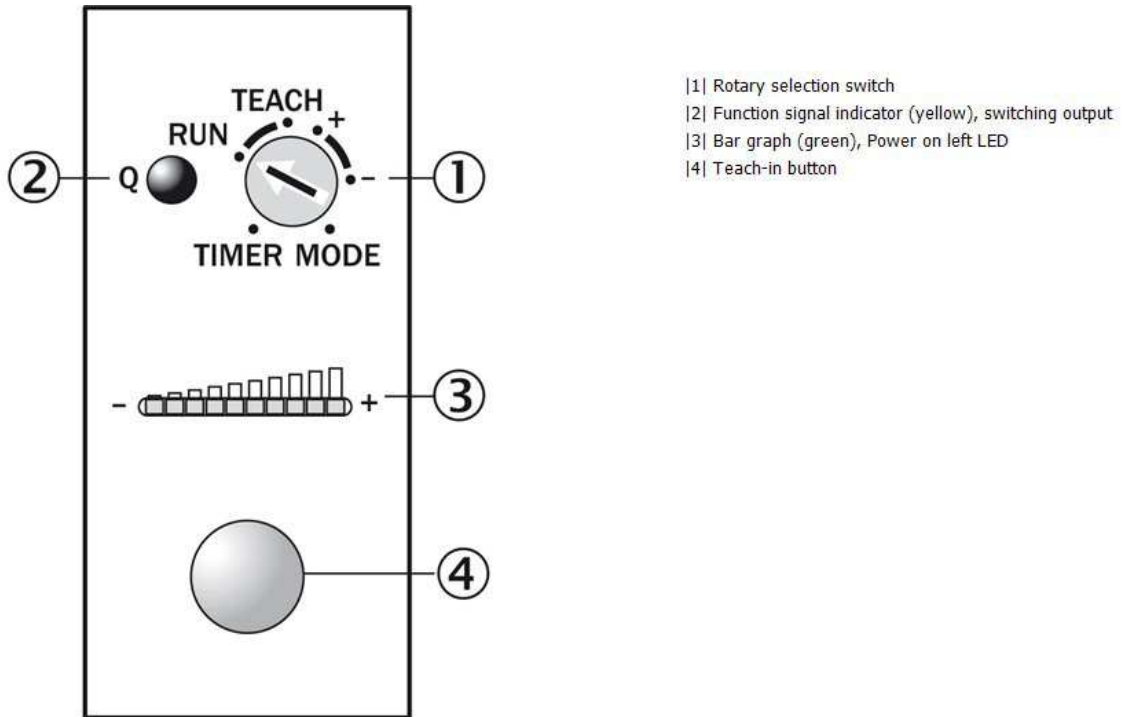
Ambient data

Shock load: According to IEC 60068
 Ambient operating temperature: -10 °C ... +55 °C
 Ambient storage temperature: -25 °C ... +75 °C

Dimensional drawing

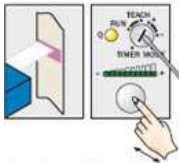


Adjustments



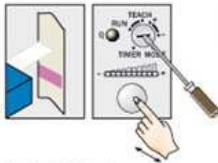
Bedienhinweis

1. Position mark



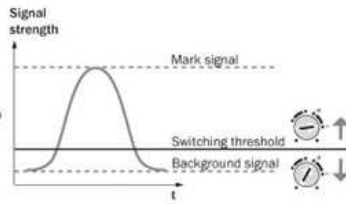
Turn rotary switch to "+" position and press and hold teach-in button until yellow light goes out (more green LEDs illuminate on the bar display).

2. Position background



If yellow LED illuminates, turn rotary switch to "-" position and press and hold teach-in button until yellow light just goes out (green LEDs go out on the bar display).

Sensitivity setting

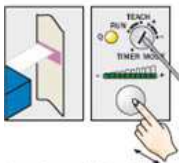


Note for all settings

Once configuration is complete, turn the rotary switch to the "RUN" position. The bar display then shows the luminescence intensity (regardless of switching threshold setting). Adjustments are intended for luminescence background suppression.

Bedienhinweis

1. Position mark



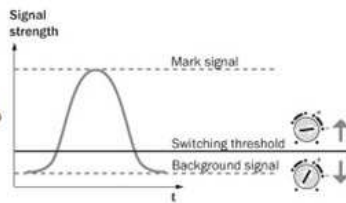
Turn rotary switch to "+" position and press and hold teach-in button until yellow light goes out (more green LEDs illuminate on the bar display).

2. Position background



If yellow LED illuminates, turn rotary switch to "-" position and press and hold teach-in button until yellow light just goes out (green LEDs go out on the bar display).

Sensitivity setting

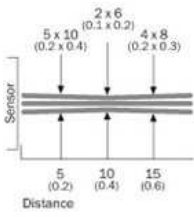


Note for all settings

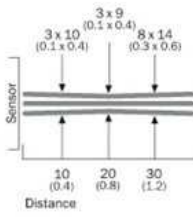
Once configuration is complete, turn the rotary switch to the "RUN" position. The bar display then shows the luminescence intensity (regardless of switching threshold setting). Adjustments are intended for luminescence background suppression.

Light spot size

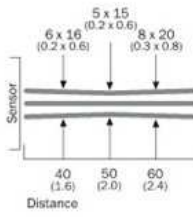
Sensing distance 10 mm



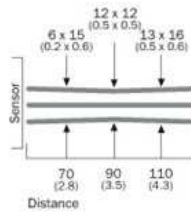
Sensing distance 20 mm



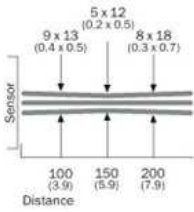
Sensing distance 50 mm



Sensing distance 90 mm

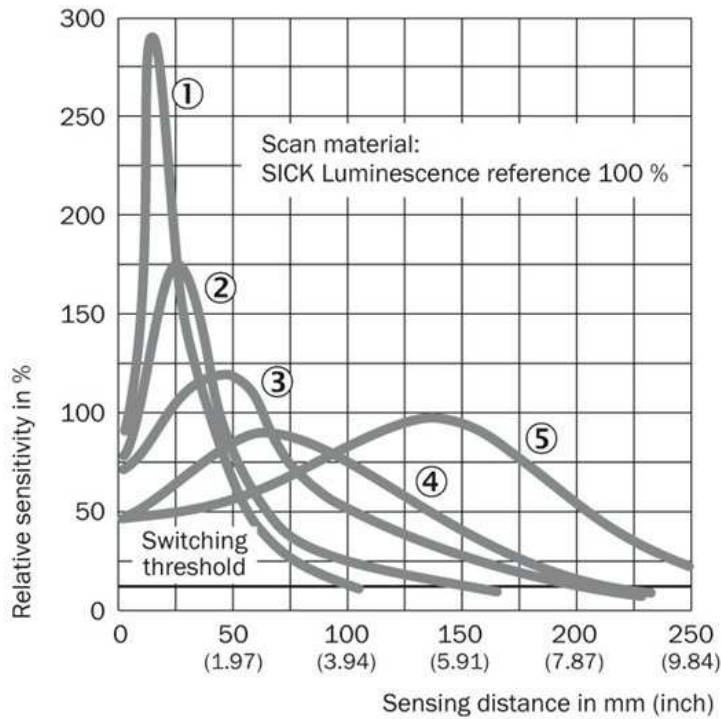


Sensing distance 150 mm



All dimensions in mm (inch)

Sensing distance



- 1| Sensing distance 10 mm
- 2| Sensing distance 20 mm
- 3| Sensing distance 50 mm
- 4| Sensing distance 90 mm
- 5| Sensing distance 150 mm

Australia

Phone +61 3 9457 0600
1800 33 48 02 – tollfree
E-Mail sales@sick.com.au

Belgium/Luxembourg

Phone +32 (0)2 466 55 66
E-Mail info@sick.be

Brasil

Phone +55 11 3215-4900
E-Mail marketing@sick.com.br

Canada

Phone +1 905 771 14 44
E-Mail information@sick.com

Česká republika

Phone +420 2 57 91 18 50
E-Mail sick@sick.cz

China

Phone +86 4000 121 000
E-Mail info.china@sick.net.cn
Phone +852-2153 6300
E-Mail ghk@sick.com.hk

Danmark

Phone +45 45 82 64 00
E-Mail sick@sick.dk

Deutschland

Phone +49 211 5301-301
E-Mail info@sick.de

España

Phone +34 93 480 31 00
E-Mail info@sick.es

France

Phone +33 1 64 62 35 00
E-Mail info@sick.fr

Great Britain

Phone +44 (0)1727 831121
E-Mail info@sick.co.uk

India

Phone +91-22-4033 8333
E-Mail info@sick-india.com

Israel

Phone +972-4-6881000
E-Mail info@sick-sensors.com

Italia

Phone +39 02 27 43 41
E-Mail info@sick.it

Japan

Phone +81 (0)3 5309 2112
E-Mail support@sick.jp

Magyarország

Phone +36 1 371 2680
E-Mail office@sick.hu

Nederland

Phone +31 (0)30 229 25 44
E-Mail info@sick.nl

Norge

Phone +47 67 81 50 00
E-Mail sick@sick.no

Österreich

Phone +43 (0)22 36 62 28 8-0
E-Mail office@sick.at

Polska

Phone +48 22 837 40 50
E-Mail info@sick.pl

România

Phone +40 356 171 120
E-Mail office@sick.ro

Russia

Phone +7-495-775-05-30
E-Mail info@sick.ru

Schweiz

Phone +41 41 619 29 39
E-Mail contact@sick.ch

Singapore

Phone +65 6744 3732
E-Mail sales.gsg@sick.com

Slovenija

Phone +386 (0)1-47 69 990
E-Mail office@sick.si

South Africa

Phone +27 11 472 3733
E-Mail info@sickautomation.co.za

South Korea

Phone +82 2 786 6321/4
E-Mail info@sickkorea.net

Suomi

Phone +358-9-25 15 800
E-Mail sick@sick.fi

Sverige

Phone +46 10 110 10 00
E-Mail info@sick.se

Taiwan

Phone +886 2 2375-6288
E-Mail sales@sick.com.tw

Türkiye

Phone +90 (216) 528 50 00
E-Mail info@sick.com.tr

United Arab Emirates

Phone +971 (0) 4 88 65 878
E-Mail info@sick.ae

USA/México

Phone +1(952) 941-6780
1 (800) 325-7425 – tollfree
E-Mail info@sickusa.com

More representatives and agencies
at www.sick.com