



Connectivity  
CDF600-2 / CDF600-2 PROFINET IO M12

CDF600-2200



**Model Name** > [CDF600-2200](#)  
**Part No.** > [1062460](#)



**At a glance**

- Flexible mounting on all standard profiles
- Flexible PROFINET IO connection via two M12 plug connectors
- Code switch for setting the operating mode
- Six LEDs for status and diagnostics
- Plug-in electrical connections
- Integrated configuration memory for connected sensors
- Compact and flexible

**Your benefits**

- Sophisticated two-screw system for fast, flexible mounting on all standard profiles
- Integrated switch for easy implementation of line topologies
- Code switch that is mounted so it is protected against accidental adjustment and is easily accessible from the outside for easy setup of operating mode without complex software
- Clear status LEDs that are identifiable on two sides from any viewing direction for simple and effective diagnosis
- Fast installation and easy replacement in the system thanks to plug-in connections
- Integrated cloning module for all configurations of the connected sensor enables very fast replacement time in case of faults
- Compact and rugged design with choice of horizontal or vertical cable direction



**Features**

Brief description:	Fieldbus proxy/gateway for connecting one identification sensor to PROFINET-IO networks (interface 2 x M12, female connector/female connector, 4-pin)
Supported products:	CLV61x, CLV62x, CLV63x, CLV64x, CLV65x, CLV69x, IDM12x, IDM14x, IDM16x, IDM24x, IDM26x, Lector@62x, RFH6xx, RFU63x
Supports cloning module (CMC):	Integrated
Supports display module (CMD):	No
Supports power supply module (CMP):	No
Supports fieldbus gateway (CMF):	Integrated (PROFINET IO)

**Interfaces**

Serial (RS-232):	✓
Function (Serial (RS-232)):	AUX
Data transmission rate (Serial (RS-232)):	57.6 kBaud
Ethernet:	✓

Function (Ethernet):	Slave
Data transmission rate (Ethernet):	2-port Ethernet in accordance with IEEE 802.3 (baud rate 100 MBit/s, full-duplex transmission, 2-port switch, auto-negotiation, auto-crossover). Maximum data length is limited by the mode of communication (fragmentation protocol) to 4,000 bytes.
Protocol (Ethernet):	PROFINET
CAN bus:	✓
Remark (CAN bus):	Depending on sensor connected
PROFIBUS DP:	-
DeviceNet:	-
Switching inputs:	1
Switching outputs:	0
Optical indicators:	6 LEDs
Configuration software:	SOPAS ET

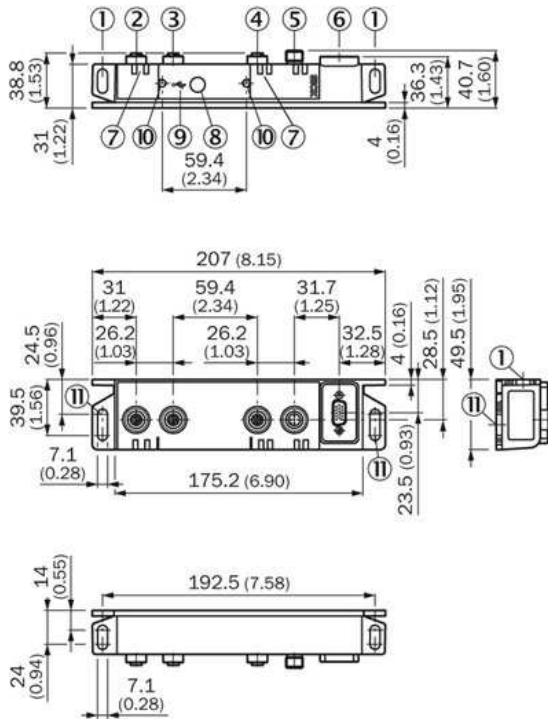
### Mechanics/electronics

Electrical connection:	1 x "DEVICE" connection, 15-pin D-sub HD female connector with seal, 1 x "EXT. IN 1" connection, 5-pin M12 female connector, A-coded, 1 x "POWER" connection, 5-pin M12 plug, A-coded, 1 x "PROFINET P1" connection, 4-pin M12 socket, D-coded, 1 x "PROFINET P2" connection, 4-pin M12 socket, D-coded, 1 x "USB" connection, 5-pin micro-B socket, for configuration/diagnostics, behind screw-mounted cover
Operating voltage:	10 V DC ... 30 V DC
Power consumption:	< 5 W, if no sensor is connected and digital switching input is not connected
Housing:	Aluminum (unpainted)
Enclosure rating:	IP 65 (EN 60068-2-17 (1995-05))
Protection class:	III (EN 60950-1 (2011-01))
Weight:	361 g
Dimensions:	207 mm x 49.5 mm x 40.7 mm
Housing color:	Aluminum (unpainted)
Scanner connection:	RS-232

### Ambient data

Electromagnetic compatibility (EMC):	EN 61000-6-3 (2011-09)/EN 61000-6-2 (2006-03)
Vibration resistance:	EN 60068-2-6 (2008-10)
Shock resistance:	EN 60068-2-27 (2010-02)
Ambient operating temperature:	-35 °C ... +50 °C
Storage temperature:	-35 °C ... +70 °C
Permissible relative humidity:	90 %, non-condensing

## Dimensional drawing



- |1| Elongated mounting hole  
(2 x), for mounting with M6 screw
- |2| "PROFINET P2" connection, 4-pin M12 socket, D-coded
- |3| "PROFINET P1" connection, 4-pin M12 socket, D-coded
- |4| "EXT. IN 1" connection,  
5-pin M12 female connector, A-coded
- |5| "POWER" connection, 5-pin M12 plug, A-coded
- |6| "DEVICE" connection, 15-pin  
D-sub HD female connector with seal
- |7| LED (6 x), status display (POWER,  
EXT. IN 1, SF, BF, P1 LNK/ACT, P2 LNK/ACT)
- |8| Rotary encoding switch „Mode", for  
operating mode, behind screw-mounted cover
- |9| "USB" connection, 5-pin micro-B socket, for  
configuration/diagnostics, behind screw-mounted cover
- |10| screw (TorxT8), captive (2 x), for cover
- |11| Elongated mounting hole  
(2 x), for mounting with M6 screw

**Australia**

Phone +61 3 9457 0600  
1800 33 48 02 – tollfree  
E-Mail sales@sick.com.au

**Belgium/Luxembourg**

Phone +32 (0)2 466 55 66  
E-Mail info@sick.be

**Brasil**

Phone +55 11 3215-4900  
E-Mail marketing@sick.com.br

**Canada**

Phone +1 905 771 14 44  
E-Mail information@sick.com

**Česká republika**

Phone +420 2 57 91 18 50  
E-Mail sick@sick.cz

**China**

Phone +86 4000 121 000  
E-Mail info.china@sick.net.cn  
Phone +852-2153 6300  
E-Mail ghk@sick.com.hk

**Danmark**

Phone +45 45 82 64 00  
E-Mail sick@sick.dk

**Deutschland**

Phone +49 211 5301-301  
E-Mail info@sick.de

**España**

Phone +34 93 480 31 00  
E-Mail info@sick.es

**France**

Phone +33 1 64 62 35 00  
E-Mail info@sick.fr

**Great Britain**

Phone +44 (0)1727 831121  
E-Mail info@sick.co.uk

**India**

Phone +91-22-4033 8333  
E-Mail info@sick-india.com

**Israel**

Phone +972-4-6881000  
E-Mail info@sick-sensors.com

**Italia**

Phone +39 02 27 43 41  
E-Mail info@sick.it

**Japan**

Phone +81 (0)3 5309 2112  
E-Mail support@sick.jp

**Magyarország**

Phone +36 1 371 2680  
E-Mail office@sick.hu

**Nederland**

Phone +31 (0)30 229 25 44  
E-Mail info@sick.nl

**Norge**

Phone +47 67 81 50 00  
E-Mail sick@sick.no

**Österreich**

Phone +43 (0)22 36 62 28 8-0  
E-Mail office@sick.at

**Polska**

Phone +48 22 837 40 50  
E-Mail info@sick.pl

**România**

Phone +40 356 171 120  
E-Mail office@sick.ro

**Russia**

Phone +7-495-775-05-30  
E-Mail info@sick.ru

**Schweiz**

Phone +41 41 619 29 39  
E-Mail contact@sick.ch

**Singapore**

Phone +65 6744 3732  
E-Mail sales.gsg@sick.com

**Slovenija**

Phone +386 (0)1-47 69 990  
E-Mail office@sick.si

**South Africa**

Phone +27 11 472 3733  
E-Mail info@sickautomation.co.za

**South Korea**

Phone +82 2 786 6321/4  
E-Mail info@sickkorea.net

**Suomi**

Phone +358-9-25 15 800  
E-Mail sick@sick.fi

**Sverige**

Phone +46 10 110 10 00  
E-Mail info@sick.se

**Taiwan**

Phone +886 2 2375-6288  
E-Mail sales@sick.com.tw

**Türkiye**

Phone +90 (216) 528 50 00  
E-Mail info@sick.com.tr

**United Arab Emirates**

Phone +971 (0) 4 88 65 878  
E-Mail info@sick.ae

**USA/México**

Phone +1(952) 941-6780  
1 (800) 325-7425 – tollfree  
E-Mail info@sickusa.com

More representatives and agencies  
at [www.sick.com](http://www.sick.com)