



Inductive proximity sensors  
Cylindrical threaded housing, IM08 NAMUR

IM08-01B-N-ZW0



**Model Name** > **IM08-01B-N-ZW0**  
**Part No.** > **6021123**



**At a glance**

- Operating distance up to 1 mm
- NAMUR
- ATEX device category 1G and 2G
- Output according to DIN EN 60947-5-6
- Types M8

**Your benefits**

- Exceptional protection in explosive areas
- Category 1G and 2G for zones 0 and 1 provides protection in explosive areas
- Output according to DIN EN 60947-5-6



**Features**

Design:	Cylindrical
Thread size:	M8 x 1
Sensing range Sn:	1 mm
Assured sensing range Sa:	0.81 mm
Installation type:	Flush
Switching frequency:	2,000 Hz
Output type:	NAMUR
Output function:	NC
Enclosure rating:	IP 67 <sup>1)</sup>
Electrical connection:	Cable, 2-wire, 2 m

<sup>1)</sup> According to EN 60529

**Mechanics/electronics**

Supply voltage:	7.5 V DC ... 25 V DC <sup>1)</sup>
Power consumption:	≤ 30 mA <sup>2)</sup>
Current consumption, sensor is activated:	≤ 1 mA
Current consumption, sensor is not activated:	≥ 2.2 mA
Hysteresis:	1 % ... 15 %
Temperature drift (of Sr):	± 10 %
EMC:	According to EN 60947-5-6
Cable material:	PVC
Conductor cross-section:	0.14 mm <sup>2</sup>
Cable diameter:	3.5 mm

Shock and vibration resistance:	30 g, 11 ms/10 ... 55 Hz, 1 mm
Ambient temperature operation:	-20 °C ... +70 °C
Housing cap material:	Plastic, PBT
Housing length:	30 mm
Thread length:	29 mm
Tightening torque, max.:	≤ 2.5 Nm
Items supplied:	Fastening nuts (2 x); width across 13, metal
EC Approval Certificate:	PTB 03 ATEX 2037
Hazardous area category:	1G, 2G
Input voltage $U_i$ max.:	15 V <sup>3)</sup>
Input power $P_i$ max.:	120 mW <sup>4)</sup>
Input current $I_i$ max.:	50 mA <sup>5)</sup>
Internal capacitance $C_i$ max.:	80 nF <sup>6)</sup>
Internal inductance $L_i$ max.:	70 μH <sup>7)</sup>
Nominal voltage:	8.2 V DC
ATEX marking:	II 1 G Ex ia IIB T6 Ta: -20 °C ... +70 °C, II 2 G Ex ia IIC T6 Ta: -20 °C ... +70 °C
Cable resistance:	50 Ω
Housing material:	Metal, Nickel-plated brass
Weight:	94 g

1) 2) When used outside the hazardous area 3) 4) 5) 6) 7) For connection only to a separately certified, intrinsically safe electrical circuit

#### Reduction factors

---

Note:	The values are reference values which may vary
Stainless steel (V2A, 304):	Ca. 0.7
Copper (Cu):	Ca. 0.3
Aluminum (Al):	Ca. 0.4
Brass (Br):	Ca. 0.5

#### Installation note

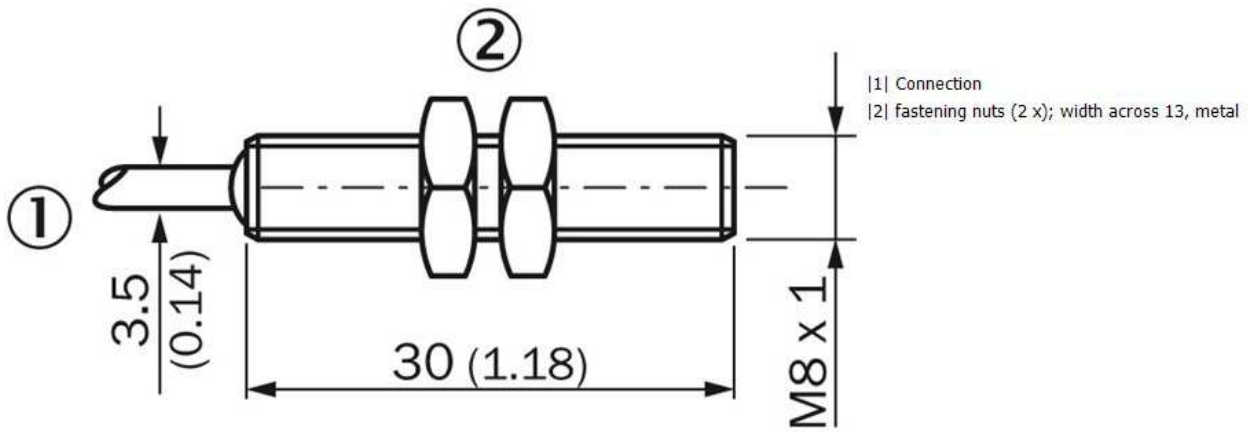
---

B:	8 mm
C:	8 mm
D:	3 mm
F:	8 mm
Remark:	Associated graphic see "Installation"

Installation note

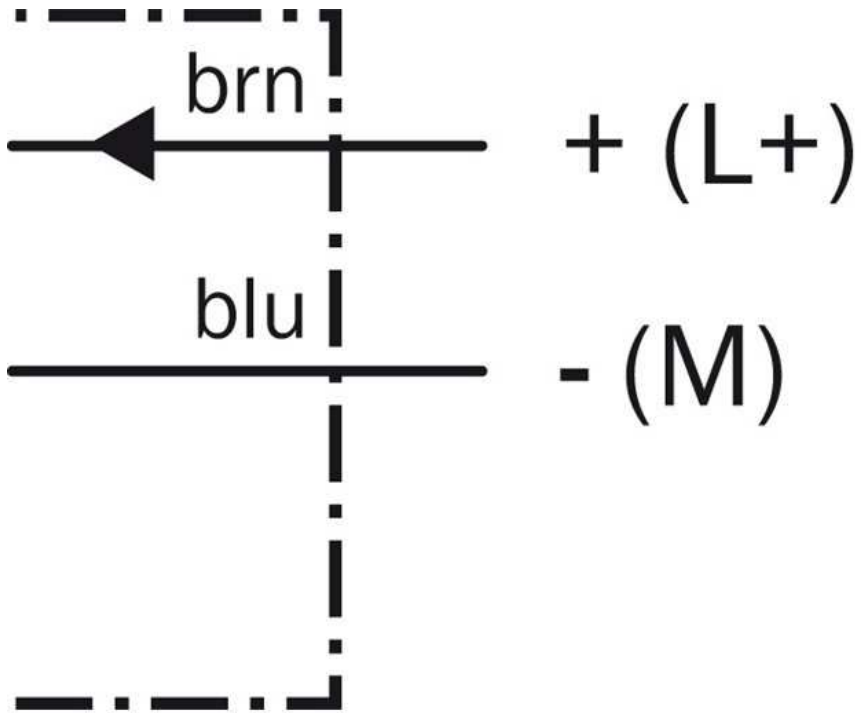


Dimensional drawing

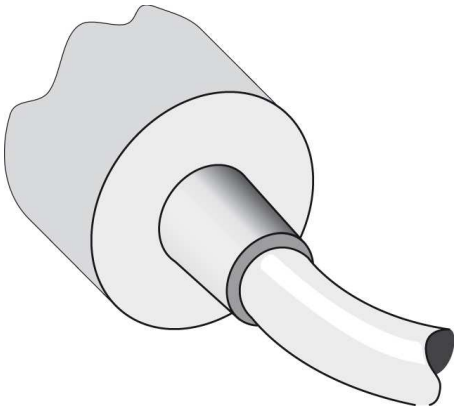


All dimensions in mm (inch)

Connection diagram



Connection type



**Australia**

Phone +61 3 9457 0600  
1800 33 48 02 – tollfree  
E-Mail sales@sick.com.au

**Belgium/Luxembourg**

Phone +32 (0)2 466 55 66  
E-Mail info@sick.be

**Brasil**

Phone +55 11 3215-4900  
E-Mail marketing@sick.com.br

**Canada**

Phone +1 905 771 14 44  
E-Mail information@sick.com

**Česká republika**

Phone +420 2 57 91 18 50  
E-Mail sick@sick.cz

**China**

Phone +86 4000 121 000  
E-Mail info.china@sick.net.cn  
Phone +852-2153 6300  
E-Mail ghk@sick.com.hk

**Danmark**

Phone +45 45 82 64 00  
E-Mail sick@sick.dk

**Deutschland**

Phone +49 211 5301-301  
E-Mail info@sick.de

**España**

Phone +34 93 480 31 00  
E-Mail info@sick.es

**France**

Phone +33 1 64 62 35 00  
E-Mail info@sick.fr

**Great Britain**

Phone +44 (0)1727 831121  
E-Mail info@sick.co.uk

**India**

Phone +91-22-4033 8333  
E-Mail info@sick-india.com

**Israel**

Phone +972-4-6881000  
E-Mail info@sick-sensors.com

**Italia**

Phone +39 02 27 43 41  
E-Mail info@sick.it

**Japan**

Phone +81 (0)3 5309 2112  
E-Mail support@sick.jp

**Magyarország**

Phone +36 1 371 2680  
E-Mail office@sick.hu

**Nederland**

Phone +31 (0)30 229 25 44  
E-Mail info@sick.nl

**Norge**

Phone +47 67 81 50 00  
E-Mail sick@sick.no

**Österreich**

Phone +43 (0)22 36 62 28 8-0  
E-Mail office@sick.at

**Polska**

Phone +48 22 837 40 50  
E-Mail info@sick.pl

**România**

Phone +40 356 171 120  
E-Mail office@sick.ro

**Russia**

Phone +7-495-775-05-30  
E-Mail info@sick.ru

**Schweiz**

Phone +41 41 619 29 39  
E-Mail contact@sick.ch

**Singapore**

Phone +65 6744 3732  
E-Mail sales.gsg@sick.com

**Slovenija**

Phone +386 (0)1-47 69 990  
E-Mail office@sick.si

**South Africa**

Phone +27 11 472 3733  
E-Mail info@sickautomation.co.za

**South Korea**

Phone +82 2 786 6321/4  
E-Mail info@sickkorea.net

**Suomi**

Phone +358-9-25 15 800  
E-Mail sick@sick.fi

**Sverige**

Phone +46 10 110 10 00  
E-Mail info@sick.se

**Taiwan**

Phone +886 2 2375-6288  
E-Mail sales@sick.com.tw

**Türkiye**

Phone +90 (216) 528 50 00  
E-Mail info@sick.com.tr

**United Arab Emirates**

Phone +971 (0) 4 88 65 878  
E-Mail info@sick.ae

**USA/México**

Phone +1(952) 941-6780  
1 (800) 325-7425 – tollfree  
E-Mail info@sickusa.com

More representatives and agencies  
at [www.sick.com](http://www.sick.com)