



## Electro-mechanical safety switches Safety locking devices, i110 Lock

i110-E0354



**Model Name** > [i110-E0354](#)  
**Part No.** > [6053945](#)

**At a glance**

- Narrow plastic housing
- Metal actuator head
- Rigid or mobile actuators
- Available with M20 X 1.5 cable entry glands or Flexi Loop-compatible M12 plug connector (depending on variant)
- Locked by spring force and magnetic force
- Lock and door monitoring

**Your benefits**

- Small design simplifies installation and makes it easy to mount directly on the guard door frame
- Flexible electrical connectivity due to three cable entry glands
- Improved diagnostics due to additional contacts for door monitoring
- Simple adjustment due to various actuators that are suitable for any door
- Different switching elements offer the appropriate solution for electrical installation
- Rugged metal housing provides increased machine reliability, even when the guard has a mechanical offset
- Flexi Loop now enables a safe series connection with enhanced diagnostics capabilities and minimal wiring effort.



*actuator not supplied with delivery*

**Note: The actuator has to be ordered separately. See "Accessories" for further details.**

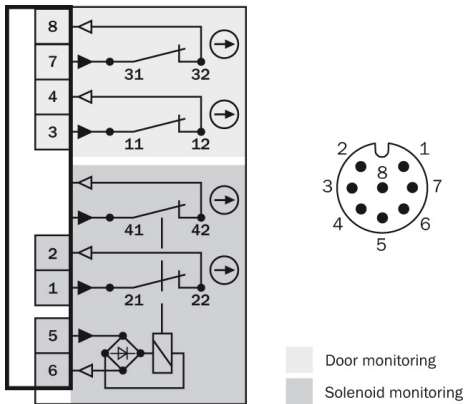


**Technical data**

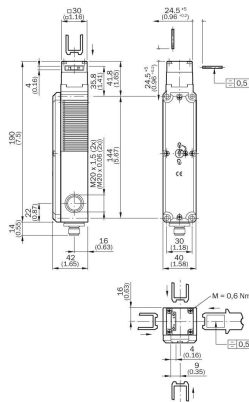
Housing material:	Glass-fiber reinforced thermoplastic
Actuating head material:	Metal
Enclosure rating:	IP 67 (IEC 60529)
Ambient operating temperature:	-20 °C ... +55 °C
B10d parameter:	5*1E 06 switching cycles, with small load
Locking type:	Electrical
Maximum locking force:	2,500 N
Number of actuation directions:	5
Approach speed:	20 m/min
Actuation force:	35 N

Max. force that can be locked against:	20 N
Switching principle:	Slow action switching element
Number of positive action N/C solenoid monitoring contacts:	1
Number of N/O solenoid monitoring contacts:	0
Number of positive action N/C door monitoring contacts:	2
Number of N/O door monitoring contacts:	0
Number of N/C door monitoring contacts:	0
Mechanical life:	1*1E 06 switching cycles
Usage category:	AC-15/DC-13 (IEC 60947-5-1)
Rated operating current (voltage):	1 A (24 V AC) 1 A (24 V DC)
Solenoid operating voltage:	24 V DC
Electrical connection:	Plug connector, M12, 8-pin
Flexi Loop-compatible plug connector:	✓
For process protection only:	✓
Weight:	0.5 kg

### Connection diagram



### Dimensional drawing



### Switching elements

Switching element	Actuator inserted		Actuator removed
	locked	unlocked	
Switching element 23	+	+	+
	⊖ 31 ↔ 32	⊖ 31 ↔ 32	⊖ 31 ↔ 32
	⊖ 11 ↔ 12	⊖ 11 ↔ 12	⊖ 11 ↔ 12
	⊖ 41 ↔ 42	⊖ 41 ↔ 42	⊖ 41 ↔ 42
	⊖ 21 ↔ 22	⊖ 21 ↔ 22	⊖ 21 ↔ 22
	⊖ 5 ↔ 6	⊖ 5 ↔ 6	⊖ 5 ↔ 6
Switching element 25	+	+	+
	⊖ 31 ↔ 32	⊖ 31 ↔ 32	⊖ 31 ↔ 32
	⊖ 11 ↔ 12	⊖ 11 ↔ 12	⊖ 11 ↔ 12
	⊖ 41 ↔ 42	⊖ 41 ↔ 42	⊖ 41 ↔ 42
	⊖ 21 ↔ 22	⊖ 21 ↔ 22	⊖ 21 ↔ 22
	⊖ 5 ↔ 6	⊖ 5 ↔ 6	⊖ 5 ↔ 6
Switching element 32	+	+	+
	⊖ 31 ↔ 32	⊖ 31 ↔ 32	⊖ 31 ↔ 32
	⊖ 11 ↔ 12	⊖ 11 ↔ 12	⊖ 11 ↔ 12
	⊖ 41 ↔ 42	⊖ 41 ↔ 42	⊖ 41 ↔ 42
	⊖ 21 ↔ 22	⊖ 21 ↔ 22	⊖ 21 ↔ 22
	⊖ 5 ↔ 6	⊖ 5 ↔ 6	⊖ 5 ↔ 6
Switching element 45	+	+	+
	⊖ 31 ↔ 32	⊖ 31 ↔ 32	⊖ 31 ↔ 32
	⊖ 11 ↔ 12	⊖ 11 ↔ 12	⊖ 11 ↔ 12
	⊖ 41 ↔ 42	⊖ 41 ↔ 42	⊖ 41 ↔ 42
	⊖ 21 ↔ 22	⊖ 21 ↔ 22	⊖ 21 ↔ 22
	⊖ 5 ↔ 6	⊖ 5 ↔ 6	⊖ 5 ↔ 6

Switching element 23:  
2 positive action N/C contacts + 1 N/O contact + 1 N/C as door contact

Switching element 25:  
2 positive action N/C contacts + 1 N/O contact as door contact + 1 N/C as door contact

Switching element 32:  
2 positive action N/C contacts + 1 N/O contact as door contact + 1 positive action N/C as door contact

Switching element 45:  
2 positive action N/C contacts + 2 positive action N/C as door contacts

**Australia**

Phone +61 3 9457 0600  
1800 33 48 02 – tollfree  
E-Mail sales@sick.com.au

**Belgium/Luxembourg**

Phone +32 (0)2 466 55 66  
E-Mail info@sick.be

**Brasil**

Phone +55 11 3215-4900  
E-Mail marketing@sick.com.br

**Canada**

Phone +1 905 771 14 44  
E-Mail information@sick.com

**Česká republika**

Phone +420 2 57 91 18 50  
E-Mail sick@sick.cz

**China**

Phone +86 4000 121 000  
E-Mail info.china@sick.net.cn  
Phone +852-2153 6300  
E-Mail ghk@sick.com.hk

**Danmark**

Phone +45 45 82 64 00  
E-Mail sick@sick.dk

**Deutschland**

Phone +49 211 5301-301  
E-Mail info@sick.de

**España**

Phone +34 93 480 31 00  
E-Mail info@sick.es

**France**

Phone +33 1 64 62 35 00  
E-Mail info@sick.fr

**Great Britain**

Phone +44 (0)1727 831121  
E-Mail info@sick.co.uk

**India**

Phone +91-22-4033 8333  
E-Mail info@sick-india.com

**Israel**

Phone +972-4-6881000  
E-Mail info@sick-sensors.com

**Italia**

Phone +39 02 27 43 41  
E-Mail info@sick.it

**Japan**

Phone +81 (0)3 5309 2112  
E-Mail support@sick.jp

**Magyarország**

Phone +36 1 371 2680  
E-Mail office@sick.hu

**Nederland**

Phone +31 (0)30 229 25 44  
E-Mail info@sick.nl

**Norge**

Phone +47 67 81 50 00  
E-Mail sick@sick.no

**Österreich**

Phone +43 (0)22 36 62 28 8-0  
E-Mail office@sick.at

**Polska**

Phone +48 22 837 40 50  
E-Mail info@sick.pl

**România**

Phone +40 356 171 120  
E-Mail office@sick.ro

**Russia**

Phone +7-495-775-05-30  
E-Mail info@sick.ru

**Schweiz**

Phone +41 41 619 29 39  
E-Mail contact@sick.ch

**Singapore**

Phone +65 6744 3732  
E-Mail sales.gsg@sick.com

**Slovenija**

Phone +386 (0)1-47 69 990  
E-Mail office@sick.si

**South Africa**

Phone +27 11 472 3733  
E-Mail info@sickautomation.co.za

**South Korea**

Phone +82 2 786 6321/4  
E-Mail info@sickkorea.net

**Suomi**

Phone +358-9-25 15 800  
E-Mail sick@sick.fi

**Sverige**

Phone +46 10 110 10 00  
E-Mail info@sick.se

**Taiwan**

Phone +886 2 2375-6288  
E-Mail sales@sick.com.tw

**Türkiye**

Phone +90 (216) 528 50 00  
E-Mail info@sick.com.tr

**United Arab Emirates**

Phone +971 (0) 4 88 65 878  
E-Mail info@sick.ae

**USA/México**

Phone +1(952) 941-6780  
1 (800) 325-7425 – tollfree  
E-Mail info@sickusa.com

More representatives and agencies  
at [www.sick.com](http://www.sick.com)