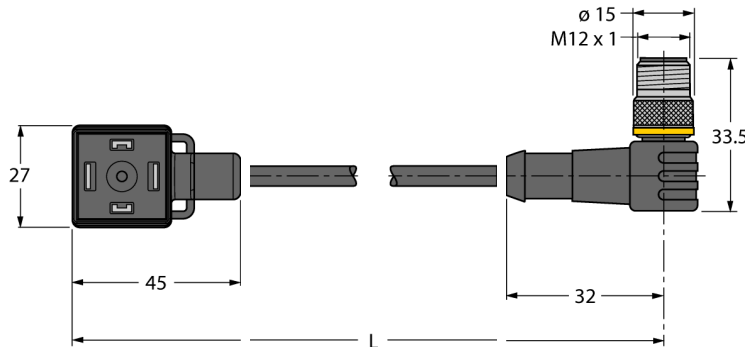


Valve connector A type
Extension Cable
VAS22-S80E-5-WSC5.31T/TXL

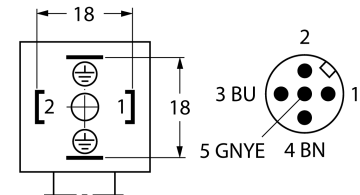


- 2-pin + PE
- Design according to the DIN EN 175301-803
- RoHS conform
- Protection class: IP67 and IP69K
- Protective component: Transil diode
- M12 male, angled, 2-pin + PE
- Sheath material: PUR
- Sheath color: black
- Qualified for drag chain use
- Resistant to weld splatter
- Resistant to chemicals and oils
- UV and ozone resistance
- Flame retardant
- Free from halogen, silicone, PVC and LABS
- Cable length: 5.0 m

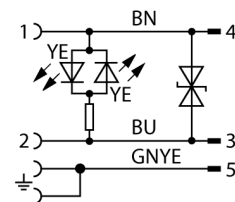
Type code	VAS22-S80E-5-WSC5.31T/TXL
Ident no.	6606797

Connector A side	Valve connector, Construction type A
Number of Pins	2+PE, PE bridged
Contacts	metal, CuSn, silver-plated
Contact carriers	plastic, PA, black
Grip	Plastic, TPU, black/translucent
Seal	plastic, TPU
Display switch state	LED yellow/yellow
Mechanical lifespan	> 100 mating cycles
Pollution degree	3
Protection class	IP67, IP69K, (mounted)

Pin Assignment



Circuit diagram



Connector B side	male connector, M12 x 1, angled
Number of pins	2+PE pins
Contacts	metal, CuZn, gold-plated
Contact carriers	plastic, TPU, black
Grip	Plastic, TPU, Black
Coupling nut/screw	brass, CuZn, nickel-plated
Protection class	IP67, IP69K, Only when screwed tight
Tightening torque	0.8 ... 1 Nm

Cable diameter	5.2 +/-0.20mm
Cable length	5 m
Cable sheath	PUR, black
Core insulation	PP
Core colors	BN, BU, GNYE
Core cross-section	3x0.34mm ²
Arrangement of strands	42x0.1 mm

Electrical features at +20 °C

Rated Voltage	24 V
Test voltage	2000 V
Ampacity	4 A
Insulation resistance	> 1 MΩ/km
Insulation resistance	≥ 10 ⁸ Ω
Forward resistance	max. 57 Ω/km

**Valve connector A type
Extension Cable
VAS22-S80E-5-WSC5.31T/TXL****Mechanical and chemical properties**

Max. tensile strength (static)	≤ 50 N/mm ²
Max. tensile strength (dynamic)	≤ 20 N/mm ²
Bending radius (stationary laying)	> 5 x Ø
Bending radius (flexible use)	> 10 x Ø
Bending cycles	> 5 mil.
Admissible acceleration	max. 5 m/s ²
Admissible travel path, horizontal	5 m (at 5 m/s ²)
Admissible travel path, vertical	2 m (at 5 m/s ²)
Admissible traversing speed	3.3 m/s
Torsional stress	± 180 °/m
Ambient temperature	
Stationary	-50 ... 80°C
In motion	-30 ... 90°C
Drag chain operation	60 ... -25°C